

1954

# SCHRADE-WALDEN CUTLERY CORPORATION

## Over Forty Years Of Leadership Producing America's Finest Quality Pocket Knives.



No. 272  
(Old No. 2725 $\frac{3}{4}$ )

Serpentine Jack Knife; 2 $\frac{7}{8}$  inches long; Staggered Handle; 2 Blades (Clip and Pen); Brass Linings; Nickel Silver Bolsters, Caps, and Shield; Large Blade Polished on one side.

Weight Per Dozen, 15 oz.



No. 766  
(Old No. R7664 $\frac{3}{4}$ B)

Wharncliffe Pattern; 3  $\frac{1}{16}$  inches long; Black Celluloid Handle; 2 Blades (Clip and Pen); Brass Linings; Nickel Silver Bolsters and Shield; Large Blade Polished on one side.

Weight Per Dozen, 11 oz.



No. 774  
(Old No. 7743)

Congress Pattern; 3 inches long; Bone Stag Handle; 2 Blades (Sheepfoot and Pen); Brass Linings; Nickel Silver Bolsters; Large Blade Polished on one side.

Weight Per Dozen, 11 oz.

Maize



No. 295K  
(Old No. 2954 $\frac{3}{4}$ K)

Serpentine Jack Knife; 3 inches long; K-Horn Celluloid Handle; 2 Blades (Clip and Pen); Brass Linings; Nickel Silver Bolsters, Caps and Shield; Large Blade Polished on one side.

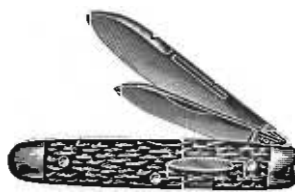
Weight Per Dozen, 1 lb., 4 oz.



No. 974  
(Old No. 9743)

Congress Pattern; 3 inches long; Bone Stag Handle; 4 Blades (2 Sheepfoot Blades and 2 Pen Blades); Brass Linings; Nickel Silver Bolsters; Large Blade Polished on one side.

Weight Per Dozen, 1 lb., 1 oz.



No. 242  
(Old No. 2423)

Equal End Jack Knife, Slim Pattern; 3 $\frac{1}{2}$  inches long; Bone Stag Handle; 2 Blades (Spear and Pen); Brass Linings; Nickel Silver Bolsters and Shield; Large Blade Polished on one side.

Weight Per Dozen, 1 lb., 3 oz.



No. 234K  
(Old No. 2344K)

Serpentine Jack Knife; 3  $\frac{5}{16}$  inches long; K-Horn Celluloid Handle; 2 Blades (Clip and Pen); Brass Linings; Nickel Silver Bolsters and Shield; Large Blade Polished on one side.

Weight Per Dozen, 1 lb., 4 oz.



No. 236  
(Old No. 2364 $\frac{3}{4}$ B)

Serpentine Jack Knife; 3  $\frac{9}{16}$  inches long; Black Celluloid Handle; 2 Blades (Clip and Pen); Brass Linings; Nickel Silver Bolsters and Shields; Large Blade Polished on one side.

Weight Per Dozen, 1 lb., 8 oz.



No. 294  
(Old No. 2943 $\frac{3}{4}$ )

Serpentine Jack Knife; 3 $\frac{7}{8}$  inches long; Bone Stag Handle; 2 Blades (Half de. Clip and Pen); Brass Linings; Nickel Silver Bolsters, Caps and Shield; Large Blade Polished on one side.

Weight Per Dozen, 2 lbs., 5 oz.

Packed half dozen in a box.

Illustrations are one-half size.



# SCHRADE - WALDEN CUTLERY CORPORATION

Over Forty Years Of Leadership  
Producing America's Finest  
Quality Pocket Knives.



No. 775

Slim Senator Pattern, 2 $\frac{7}{8}$  inches long; K-Horn Celluloid Handles; 2 Stainless Steel Blades (Spear and Pen); Nickel Silver Tips, Shield and Linings; Stainless Steel Spring. Large Blade Polished on one side. Packed in individual gift boxes, six boxes to a tray.

Weight Per Dozen, 9 oz.

No. 776 — Same as above but with Solid Marine Pearl Handles.

No. 777 — Same as above but with Maize Celluloid Handles.



No. 749

Office Knife, 3-7/16 inches long; Ivory Celluloid Handles stamped as shown above; 2 Blades (Spear and Office Blade); Brass Linings; Spear Blade Polished on one side.

Weight Per Dozen, 17 oz.



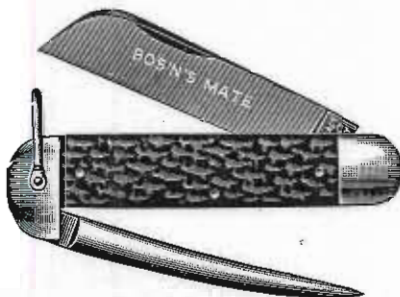
No. 782

Serpentine Pen Knife, 2 $\frac{3}{4}$  inches long; Solid Marine Pearl Handles; 2 Stainless Steel Blades (Clip and Pen); Brass Linings; Nickel Silver Bolsters and Shield; Stainless Steel Spring. Large Blade Polished on one side. Packed in individual gift boxes, six boxes to a tray.

Weight Per Dozen, 10 oz.

No. 781 — Same as above but with K-Horn Celluloid Handles.

No. 783 — Same as above but with Maize Celluloid Handles.



No. 735

Marline Spike Knife, 4 $\frac{1}{8}$  inches long; Unbreakable Stagged Handles; Large Sheepfoot Blade and Marline Spike; Brass Linings; Nickel Silver Bolsters, Caps and Shackle; Cutting Blade Glaze Finished.

Weight Per Dozen, 4 lbs.



No. 150

Safety Push Button Knife, Light Hunting Knife Pattern, 4 inches long; Stagged Handles; Slim Clip Blade; Brass Linings; Nickel Silver Bolsters and Caps; Blade Polished on one side.

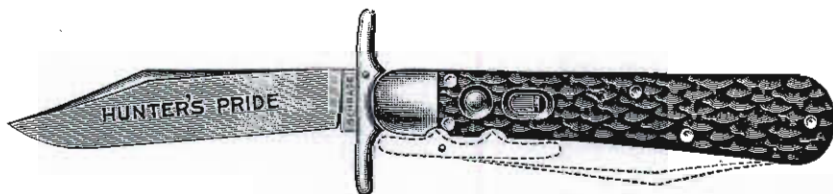
Weight Per Dozen, 1 lb., 8 oz.



No. 787

Muskrat Knife, 4 inches long; Bone Stag Handles; 2 Skinning Blades; Brass Linings; Nickel Silver Bolsters and Shield; Master Blade Polished on one side.

Weight Per Dozen, 1 lb., 12 oz.



No. 153

Safety Push Button Hunting Knife, 4 $\frac{7}{8}$  inches long; Stagged Handles; Large Clip Blade; Steel Bolsters and Linings; Nickel Silver Folding Guard; Blade Glaze Finished.

Weight Per Dozen, 4 lbs., 8 oz.



No. 152

Safety Push Button Knife, Light Hunting Knife Pattern, 4 inches long; Celluloid Handles in Assorted Colors; Slim Clip Blade; Brass Linings; Nickel Silver Bolsters and Caps; Blade Polished on one side.

Weight Per Dozen, 1 lb., 8 oz.

No. 149 — Same as above but with Stagged Handles.

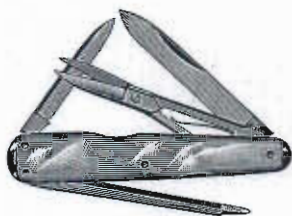




SCHRADE-WALDEN CUTLERY  
CORPORATION

*Quality Gift Knives*

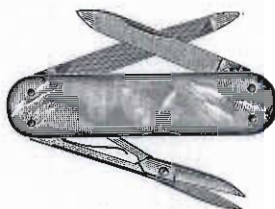
INDIVIDUALLY PACKED IN HANDSOME  
LEATHERETTE GIFT BOXES



No. 967

Scissors Knife, Sleeveboard Lobster Pattern; 3 inches long; Manicure File, Pen and Spear Pocket Blades and Scissors; Nickel Silver Linings and Tips; Cleaned inside; Blades Full Polished; Mother of Pearl Handle.

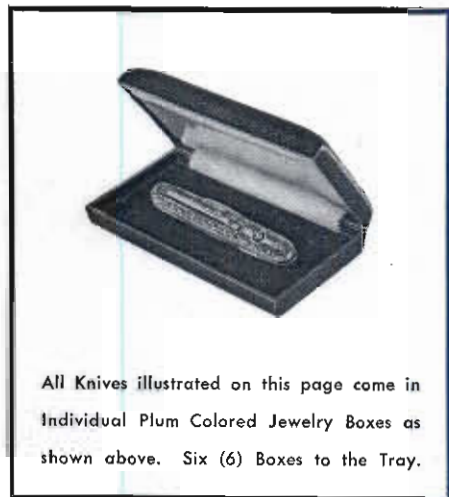
Weight Per Dozen, 1 lb., 14 oz.



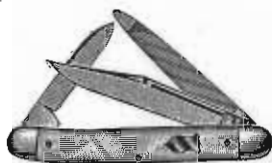
No. 877

Scissors Knife, Lobster Pattern, 2 $\frac{3}{4}$  inches long; Flexible Manicure File, Spear Pocket Blade and Scissors; Nickel Silver Lined; Cleaned inside; Blades Full Polished; Mother of Pearl Handle.

Weight Per Dozen, 1 lb. 9 oz.



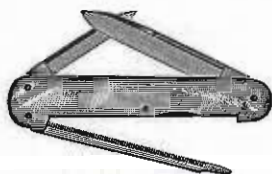
All Knives illustrated on this page come in Individual Plum Colored Jewelry Boxes as shown above. Six (6) Boxes to the Tray.



No. 809M  
"ESQUIRE"

Serpentine Pattern, 2 $\frac{3}{4}$  inches long; Marine Pearl Handle; Milled Back; 3 Blades (Clip, Pen and Flexible File); Brass Linings; Nickel Silver Bolsters and Shield; Large Blade Polished on one side.

Weight Per Dozen, 12 oz.



No. 848  
"COSMOPOLITAN"

Sleeveboard Lobster Pattern, 2 $\frac{3}{4}$  inches long; Marine Pearl Handle; 3 Blades (Spear, Pen and Nail File); Nickel Silver Linings; Large Blade Polished on one side.

Weight Per Dozen, 12 oz.



No. 746  
"EXECUTIVE"

Safety Push Button Knife, 2 $\frac{7}{8}$  inches long; Stainless Steel Handle; 2 Blades (Spear and Nail File); Nickel Silver Linings; Blades Full Polished.

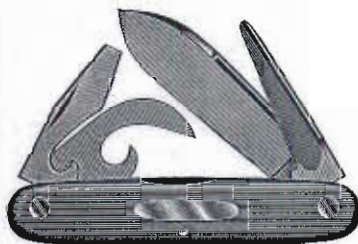
Weight Per Dozen, 12 oz.



No. 837  
"WHITTLER"

Serpentine Pattern, 3-9/16 inches long; Bone Stag Handle; Milled Back; 3 Blades (Saber Clip, Pen and Coping); Brass Linings; Nickel Silver Bolsters and Shield; Blades Full Polished.

Weight Per Dozen, 1 lb., 14 oz.



No. 917  
"SPORTSTER"

Shadow Pattern, 3 $\frac{5}{8}$  inches long; Red Fibre Handle; Milled Back; 4 Blades (Spear, Leather Punch, Canopener and Screwdriver-caplifter); Brass Linings; Nickel Silver Shield; Large Blade Polished on one side.

Weight Per Dozen, 3 lbs.



No. 825  
"WESTERNER"

Slim Premium Pattern, 3-9/16 inches long; Bone Stag Handle; Milled Back; 3 Stainless Steel Blades (Clip, Sheepfoot and Spey); Nickel Silver Linings; Bolsters and Shield; Large Blade Polished on one side.

Weight Per Dozen, 1 lb., 14 oz.



1954

# SCHRADE-WALDEN CUTLERY CORPORATION

## Over Forty Years Of Leadership Producing America's Finest Quality Pocket Knives.



No. 200

Smokers' Knife, Senator Pattern, 3 inches long; Dual Nickel Silver Handle; 2 Blades (Spear Pocket Blade and Piercer — for piercing cigars or cleaning pipe); Nickel Silver Tamper on end; Blade Polished on one side. Each knife packed with flannel purse in individual box.

Weight Per Dozen, 1 lb., 4 oz.



No. 204

(Old No. C2041SD)

Electrician's Knife (Lock-back), 3 3/4 inches long; Cocobola Handle; 2 Blades (Spear Blade and Screwdriver - wire scrapper Blade); Center Lock; Brass Linings; Nickel Silver Bolsters and Shield; Large Blade Polished on one side.

Weight Per Dozen, 3 lbs., 0 oz.



No. 812

Champagne Jr. Knife, 3 inches long; Nickel Silver Handle; 3 Blades (Spear Blade, Flexible Manicure File and Corkscrew); Caplift Formed by Springs and Handle; Spear Blade Polished on one side. Each knife packed with flannel purse in individual box.

Weight Per Dozen, 1 lb., 10 oz.

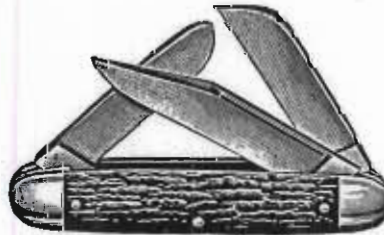


No. 834

(Old No. 8343)

Serpentine Knife, 3 5/16 inches long; Bone Stag Handle; 3 Blades (Clip, Spey and Pen); Brass Linings; Nickel Silver Bolsters and Shield; Large Blade Polished on one side.

Weight Per Dozen, 1 lb., 4 oz.

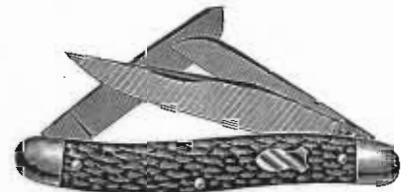


No. 856

(Old No. S8563 3/4)

Cattle Knife, 3 3/8 inches long; Bone Stag Handle; 3 Blades (Clip, Sheepfoot and Spey); Brass Linings; Nickel Silver Bolsters; Large Blade Polished on one side.

Weight Per Dozen, 2 lbs., 0 oz.



No. 861

(Old No. 8613)

Slim Premium Stock Knife, 4 inches long; Bone Stag Handle; 3 Blades (Turkish Clip, Sheepfoot and Spey); Nickel Silver Linings, Bolsters and Shield; Milled Back; Large Blade Polished on one side.

Weight Per Dozen, 1 lb., 10 oz.



No. 890

(Old No. 8903)

Premium Stock Knife, 3 1/2 inches long; Bone Stag Handle; 3 Blades (Clip, Sheepfoot and Spey); Brass Linings; Nickel Silver Bolsters and Shield; Large Blade Polished on one side.

Weight Per Dozen, 1 lb., 12 oz.



No. 891

(Old No. 8913)

Premium Stock Knife, 3 1/2 inches long; Bone Stag Handle; 3 Blades (Clip, Spey and Leather Punch); Brass Linings; Nickel Silver Bolsters and Shield; Large Blade Polished on one side.

Weight Per Dozen, 1 lb., 12 oz.



No. 899

(Old No. 8993 1/4)

Slim Premium Stock Knife, 3 9/16 inches long; Bone Stag Handle; 3 Blades (Turkish Clip, Spey and Leather Punch); Brass Linings; Nickel Silver Bolsters and Shield; Large Blade Polished on one side.

Weight Per Dozen, 1 lb., 12 oz.





# SCHRADE-WALDEN CUTLERY CORPORATION

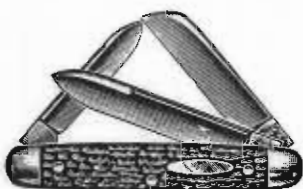
Over Forty Years Of Leadership  
Producing America's Finest  
Quality Pocket Knives.



No. 808  
(Old No. 8)

Serpentine Pattern; 2¾ in. long; Staged Handle; 3 Blades (Clip, Sheepfoot and Pen); Brass Linings; Nickel Silver Bolsters and Shield; Milled Backs; Large Blade Polished on one side; Each Knife Packed with Purse in Individual Box.

Weight Per Dozen, 1 lb., 3 oz.



No. 810  
(Old No. 8103)

Senator Pattern; 3½ inches long; Bone Stag Handle; 3 Blades (Spear, Sheepfoot and Pen); Brass Linings; Nickel Silver Bolsters and Shield; Large Blade Polished on one side.

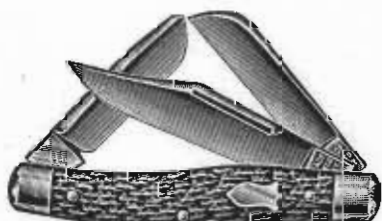
Weight Per Dozen, 1 lb., 4 oz.



No. 842  
(Old No. M8424MT)

Senator Pattern; 3½ inches long; Marine Pearl Handle; 3 Blades (Spear, Pen and Long Flexible Nail File); Brass Linings; Nickel Silver Tips and Shield; Large Blade Polished on one side.

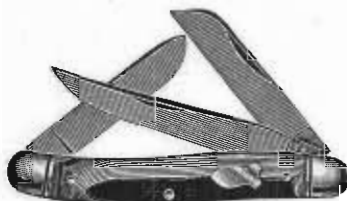
Weight Per Dozen, 1 lb., 1 oz.



No. 881  
(Old No. 8815)

Premium Stock Knife, Texas Pattern; 4 in. long; Bone Stag Handle; 3 Blades (Clip, Spey and Sheepfoot); Brass Linings; Nickel Silver Bolsters and Shield; Large Blade Polished on one side.

Weight Per Dozen, 2 lbs., 6 oz.



No. 896K  
(Old No. 8964K)

Slim Premium Stock Knife; 3 9/16 inches long; K-Horn Celluloid Handle; 3 Blades (Clip, Sheepfoot and Spey); Brass Linings; Nickel Silver Bolsters and Shield; Large Blade Polished on one side.

No. 895

Same as above, but with Bone Stag Handle.

Weight Per Dozen, 1 lb., 8 oz.



No. 836  
(Old No. 8364½B)

Serpentine Pattern; 3 9/16 inches long; Black Celluloid Handle; 3 Blades (Large Sabre Clip, Small Clip and Pen); Brass Linings; Nickel Silver Bolsters and Shield; Blades Full Polished.

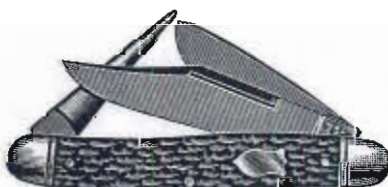
Weight Per Dozen, 1 lb., 10 oz.



No. 804  
(Old No. 4)

Mechanics Knife; 3¾ in. long; Bone Stag Handle; 3 Blades (Large Sabre Clip, Small Clip, and Coping Pen); Brass Linings; Nickel Silver Bolsters and Shield; Large Blade Polished on one side; Individually Packed with Purse.

Weight Per Dozen, 2 lbs., 13 oz.



No. 883  
(Old No. R8833)

Premium Stock Knife; 4 inches long; Bone Stag Handle; 3 Blades (Clip, Spey and Leather Punch); Brass Linings; Nickel Silver Bolsters and Shield; Large Blade Polished on one side.

Weight Per Dozen, 2 lbs., 4 oz.



No. 136  
(Old No. 1361SHA)

Linemen's Skinning Knife; with Shackle; 4 7/16 inches long; Cocobola Handle; 1 Large Skinning Blade; Steel Linings; Steel Bolsters; Glaze Finished Blade.

Weight Per Dozen, 3 lbs., 8 oz.

1954

# SCHRADE-WALDEN CUTLERY CORPORATION



## Over Forty Years Of Leadership Producing America's Finest Quality Pocket Knives.



**No. 708**  
(Old No. 71085½)  
Serpentine Pen Knife; 2¾ inches long; Staggered Handle; 2 Blades (Clip and Pen); Brass Linings; Nickel Silver Bolsters and Shield; Large Blade Polished on one side.

Weight Per Dozen, 10 oz.



**No. 793**  
(Old No. M7934MT)  
Slim Senator Pattern; 2½ inches long; Solid Marine Pearl Handle; 2 Blades (Spear and Flexible Nail File); Nickel Silver Linings and Tips; Large Blade Polished on one side.

**No. 793SHA**  
(Old No. M7934MTSHA)  
Same Knife with Nickel Silver Shackle.  
Weight Per Dozen, 8 oz.



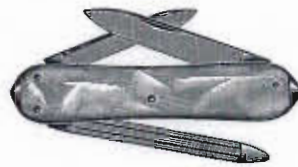
**No. 770**  
(Old No. M7705T)  
Senator Pattern; 2¾ inches long; Staggered Handle; 2 Blades (Spear and Flexible Nail File); Brass Linings; Nickel Silver Tips and Shield; Large Blade Polished on one side.

Weight Per Dozen, 9 oz.



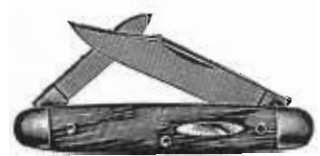
**No. 970**  
(Old No. 9706T)  
Senator Pattern; 2¾ inches long; Mother of Pearl Handle; 4 Blades (Spear, Pen, Flexible Manicure File and Surgical Lance Blade); Nickel Silver Linings Milled; Nickel Silver Tips; Blades Full Polished; Each Knife Packed with Purse in Individual Box.

Weight Per Dozen, 12 oz.



**No. 865**  
(Old No. 8654MT)  
Sunfish Lobster Pattern; 3 inches long; Marine Pearl Handle; 3 Blades (Spear, Pen and Long Nail File); Nickel Silver Tips; Brass Linings; Large Blade Polished on one side. Each Knife Packed with Purse in Individual Box.

Weight Per Dozen, 13 oz.



**No. 760**  
(Old No. 7424¼YB)  
Senator Pattern; 3¼ inches long; Mottled Brown Horn Celluloid Handle; 2 Blades (Clip and Pen); Brass Linings; Nickel Silver Bolsters and Shield; Large Blade Polished on one side.

Weight Per Dozen, 14 oz.



**No. 946SHA**  
(Old No. 46)  
Senator Pattern; 2¾ inches long; Stainless Steel Engine Turned Handle; 4 Blades (Stainless Steel Spear, Stainless Steel Pen, Stainless Steel Lance Blade and Flexible Nail File); Blades Full Polished; Each Knife Packed with Purse in Individual Box; with Shackle.

**No. 946**  
(Old No. 146)  
Same as above, without Shackle.  
Weight Per Dozen, 1 lb., 9 oz.



**No. 709SHA**  
(Old No. 48)  
Senator Pattern; 3 1/16 inches long; Stainless Steel Engine Turned Handle; 1 Stainless Steel Spear Blade and Flexible Nail File; with Shackle; Large Blade Polished on one side; Each Knife Packed with Purse in Individual Box.

**No. 709**  
(Old No. 148)  
Same as above, without Shackle.  
Weight Per Dozen, 1 lb., 2 oz.



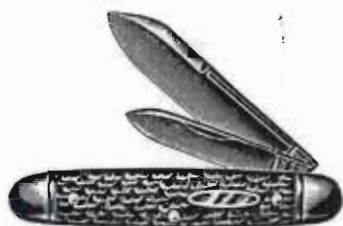
**No. SS755**  
(Old No. SSR7429S1)  
Ring Opening Knife, Senator Pattern; Turn the Ring and the Blade Opens; 3¼ inches long; Stainless Steel Handle; 2 Stainless Steel Blades (Spear and Pen); Large Blade Polished on one Side. Each Knife Packed with Purse in Individual Box.

Weight Per Dozen, 11 oz.



1954

# SCHRADE-WALDEN CUTLERY CORPORATION



No. 256

Equal End Jack Knife, 3 $\frac{3}{8}$  inches long, Bone Stag Handle; 2 Blades (Spear and Pen); Brass Linings; Nickel Silver Bolsters and Shield; Large Blade Polished on one side.

Weight Per Dozen, 2 lbs.



No. 778

Senator Pattern, 2 $\frac{7}{8}$  inches long; Stainless Steel Handle; Stainless Steel Spear Blade and Flexible Nail File; Spear Blade Polished on one side.

Weight Per Dozen, 8 oz.



No. 163

Rope or Hawser Knife, 4 $\frac{7}{8}$  inches long; Cocobola Handle; 1 Large Square Point Blade, Steel linings; Steel Bolsters; Glaze Finished Blade.

Weight Per Dozen, 3 lbs.



No. 757

Senator Pattern, 3 $\frac{1}{8}$  inches long; Staged Handle; 2 Blades (Spear and Pen); Brass Linings; Nickel Silver Tips and Shield; Large Blade Polished on one side.

Weight Per Dozen, 12 oz.



No. 736

Marline Spike Knife, 4 $\frac{1}{8}$  inches long; Stainless Steel Handle; Large Stainless Steel Sheepfoot Blade and Stainless Steel Marline Spike; Nickel Silver Shackle; Cutting Blade Glaze Finished.

Weight Per Dozen, 4 lbs.



No. 832

Serpentine Pattern; 3 $\frac{5}{8}$  inches long; Propwood Handle; 3 Blades (Clip, Sheepfoot and Pen); Brass Linings; Nickel Silver Bolsters and Shield; Large Blade Polished on one side.

Weight Per Dozen, 1 lb., 4 oz.



No. 225

Hunter's and Trapper's Knife, 5 $\frac{1}{4}$  inches long; Staged Handles; 2 Blades (Large Full Saber Clip and Large Skinning Blade); Brass Linings; Nickel Silver Bolsters and Caps; Glaze Finished Blades.

Weight Per Dozen, 4 lbs., 12 oz.

No. 225H—Same as above with Hole for attaching thong.



No. 173

Fixed Blade Grafting Knife, 6 $\frac{7}{8}$  inches long; One Carbon Steel Grafting Blade 2 $\frac{9}{8}$  inches long; Imported Cocobolawood Handles; Compression Rivets; Blade Glaze Finished. Packed one dozen to a chipboard box.

Weight Per Dozen, 1 lb.



No. 170

Stationary Blade Pruning Knife, 7 $\frac{3}{8}$  inches long overall; Round Hardwood Handle with Special Feature for firm gripping; Compression Rivets; Blade Glaze Finished.

Weight Per Dozen, 2 lbs., 6 oz.



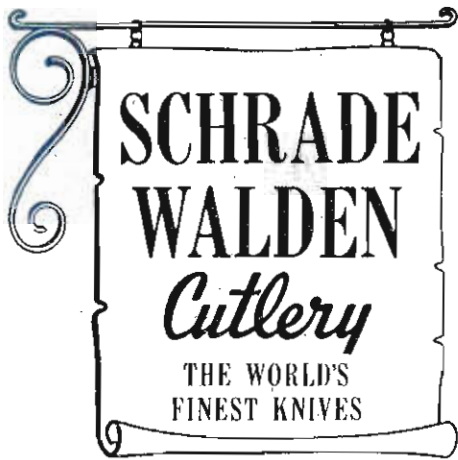
No. 174

Fixed Blade Budding Knife, 6 inches long; One Carbon Steel Budding Blade 2 $\frac{1}{8}$  inches long; Imported Cocobolawood Handles; Compression Rivets; Blade Glaze Finished. Packed one dozen to a chipboard box.

Weight Per Dozen, 1 lb.

Packed half dozen in a box, except as noted.

Illustrations are one-half size.



SCHRADE-WALDEN CUTLERY  
CORPORATION

Over Fifty Years Of Leadership  
Producing America's Finest  
Quality Pocket Knives.

**Genuine, Original SCHRADE WALDEN Push Button Knives.**



No. 742  
(Old No. 7405)

Safety Push Button Knife; 3 $\frac{3}{8}$  inches long; Staggered Handle; 2 Blades (Spear and Pen); Brass Linings; Large Blade Polished on one side.

Weight Per Dozen, 1 lb., 2 oz.



No. 745  
(Old No. 7444AC)

Safety Push Button Knife; 2 $\frac{7}{8}$  inches long; Celluloid Handles in Assorted Colors; 2 Blades (Spear and Pen); Brass Linings; Large Blade Polished on one side.

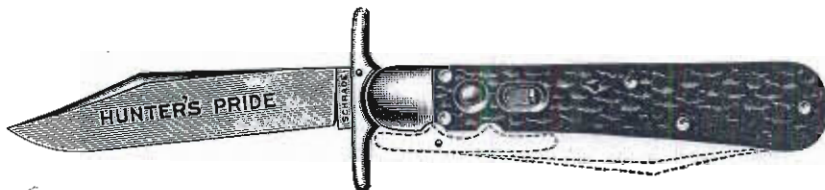
Weight Per Dozen, 11 oz.



No. 150

Safety Push Button Knife, Light Hunting Knife Pattern, 4 inches long; Staggered Handles; Slim Clip Blade; Brass Linings; Nickel Silver Bolsters and Caps; Blade Polished on one side.

Weight Per Dozen, 1 lb., 8 oz.

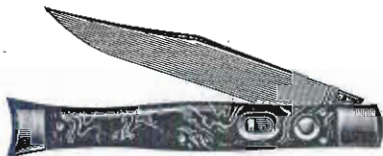


No. 153

Safety Push Button Hunting Knife, 4 $\frac{7}{8}$  inches long; Staggered Handles; Large Clip Blade; Steel Bolsters and Linings; Nickel Silver Folding Guard; Blade Glaze Finished.

Weight Per Dozen, 4 lbs., 8 oz.

Packed half dozen in a box.



No. 151  
(Old No. 1514AC)

Safety Push Button Knife, Light Hunting Knife Type; 4 inches long; Celluloid Handles in Assorted Colors; Slim Clip Blade; Brass Linings; Nickel Silver Bolsters; Blade Polished on one side.

Weight Per Dozen, 1 lb., 8 oz.



No. 154  
(Old No. 1545 $\frac{3}{4}$ )

Safety Push Button Knife; 4 $\frac{7}{8}$  inches long; Staggered Handle; Large Clip Blade; Steel Linings; Steel Bolsters; Glaze Finished Blade.

Weight Per Dozen, 3 lbs., 5 oz.



No. 155  
(Old No. 1555 $\frac{3}{4}$ )

Safety Push Button Knife; 4 $\frac{1}{4}$  inches long; Staggered Handle; Large Clip Blade; Steel Linings; Steel Bolsters; Glaze Finished Blade.

Weight Per Dozen; 2 lbs., 13 oz.

Packed half dozen in a box, except as noted.

Illustrations are one-half size.



# SCHRADE-WALDEN CUTLERY

CORPORATION

## PROFESSIONAL HORTICULTURAL KNIVES

No. 190  
(Old No. 1694B)

Budding Knife with Stationary Genuine Ivory Budder;  $4\frac{1}{8}$  inches long over all; Handle  $3\frac{1}{8}$  inches long; 1 Budding Blade; Brass Lined; Nickle Silver Bolsters; Glaze-Finished Blade; Black Celluloid Handle.  
Weight Per Dozen, 1 lb., 3 oz.

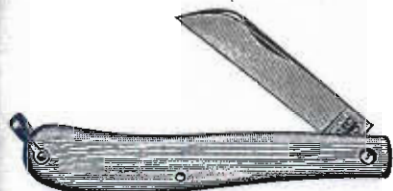


1954

# SCHRADE WALDEN

## Cutlery

EVERLASTINGLY SHARP  
TRADE MARK



No. 195  
(Old No. S1944 $\frac{1}{2}$ WPH)

Florists' Grafting Knife with Shackle;  $3\frac{3}{8}$  inches long; 1 Grafting Blade; Brass Linings; Nickle Silver Shackle; Glaze-Fin-



No. 716  
(Old No. 7164 $\frac{1}{2}$ WPH)

Budding and Grafting Knife;  $3\frac{3}{8}$  inches long; 2 Blades (Budding Blade and Grafting Blade); Brass Linings; Nickle Silver Bolsters; Glaze-Finished Blades; Ivory Celluloid Handle.  
Weight Per Dozen, 1 lb., 14 oz.



No. 196  
(Old No. S1944 $\frac{1}{2}$ WPH)

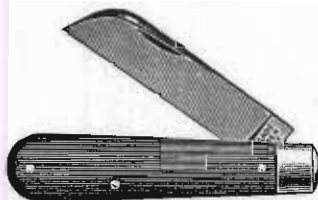
Florists' Pruning Knife with Shackle;  $3\frac{3}{8}$  inches long; 1 Light Pruning Blade; Brass Linings; Nickle Silver Shackle; Glaze-Finished Blade; Ivory Celluloid Handle; No Imprinting. Imprinting similar to illustration furnished at extra cost.  
Weight Per Dozen, 1 lb., 5 oz.



No. 733

Greenskeeper's Knife, 4 inches long; Ivory Plastic Handles; 2 Blades (large Spear Pocket and Special Weeder Blade); Brass Linings; Nickel Silver Bolsters; Glaze Finished Blades.

Weight per dozen, 2 $\frac{1}{2}$  lbs.



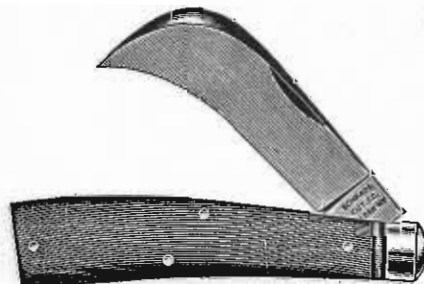
No. 175  
(Old No. B1151 $\frac{1}{2}$ )

Grafting Knife;  $3\frac{3}{8}$  inches long; 1 Grafting Blade; Brass Linings; Steel Bolsters; Glaze-Finished Blade; Cocobola Handle.  
Packed One Dozen in a Box.

No. 176 (Old No. B1154 $\frac{1}{2}$ W)

Same as above, but with White Celluloid Handle.

Weight Per Dozen, 1 lb., 10 oz.



No. 186  
(Old No. 1361)

Large Pruning Knife;  $4\frac{7}{16}$  inches long; 1 Large Pruning Blade; Steel Linings; Steel Bolsters; Glaze-Finished Blade; Cocobola Handle.

Weight Per Dozen, 3 lbs., 2 oz.

Budding and Pruning Knife;  $4\frac{1}{8}$  inches long; 2 Blades (Budding Blade and Pruning Blade); Brass Linings; Steel Bolsters; Nickle Silver Shield; Glaze-Finished Blades; Bone Stag Handle.

Weight Per Dozen, 2 lbs., 4 oz.

*The Schrade-Walden Blade with the Flat Side for more expert work in Budding and Grafting*

These blades are specially tempered and ground flat on one side. This results in a super-keen cutting edge. All cuts are uniformly flat and undamaged because the flat side alines itself automatically with the natural cutting direction. These SCHRADE-WALDEN Flat-Sided Blades assure you successful budding or grafting with more "TAKES" due to the perfect joint between scion and stock.

No. 182  
(Old No. 1354 $\frac{1}{2}$ B)



Grafting Knife; 4 inches long; Flat Sided Blade; Thick Brass Lining; Cleaned Inside; Glaze-Finished Blade; Black Celluloid Handle.

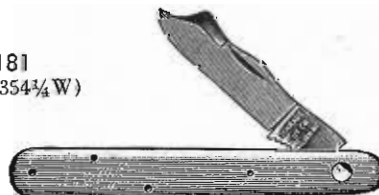
No. 183 (Old No. 1354 $\frac{1}{2}$ W)

Same as above, but with White Celluloid Handle.

Weight Per Dozen, 1 lb., 12 oz.

Packed half dozen in a box, except as noted.

No. 181  
(Old No. 1354 $\frac{1}{4}$ W)



Budding Knife; 4 inches long; Flat Sided Blade with Bark Loosener on Back; Thick Brass Linings; Cleaned Inside; Glaze-Finished Blade; White Celluloid Handle.

No. 180 (Old No. 1354 $\frac{1}{4}$ B)

Same as above, but with Black Celluloid Handle.

Weight Per Dozen, 1 lb., 12 oz.

Illustrations are one-half size.

1954

# SCHRADE-WALDEN CUTLERY CORPORATION

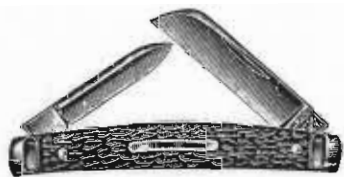
## Over Forty Years Of Leadership Producing America's Finest Quality Pocket Knives.



No. 758

Senator Pattern 3 1/8 inches long; Marine Pearl Handle; 2 Blades (Spear and Pen); Brass Linings; Nickel Silver Tips and Shield; Large Blade Polished on one side.

Weight Per Dozen, 12 oz.



No. 773

Congress Pattern, 3 1/2 inches long; Bone Stag Handle; 2 Blades (Sheepfoot and Pen); Brass Linings; Nickel Silver Shield; Steel Bolsters; Large Blade Polished on one side.

Weight Per Dozen, 1 lb., 6 oz.



No. 973

Congress Pattern, 3 1/2 inches long; Bone Stag Handle; 4 Blades (2 Sheepfoot Blades and 2 Pen Blades); Brass Linings; Nickel Silver Shield; Steel Bolsters; Large Blade Polished on one side.

Weight Per Dozen, 1 lb., 12 oz.

Steel bar

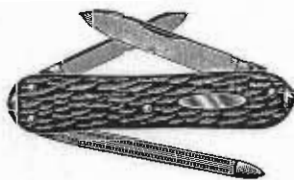


No. 219

Small Serpentine Jack Knife; 2 3/4 inches long; Stag Handle; 2 Blades (Clip and Pen); Brass Linings; Nickel Silver Bolsters and Shield; Large Blade Polished on one side.

Weight Per Dozen, 14 oz.

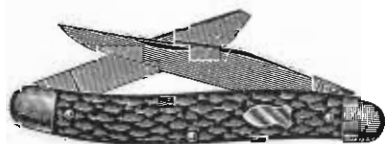
No. 218 — Same as above but with Marine Pearl Handle.



No. 864

Sunfish Lobster Pattern; 3 inches long; Stag Handle; 3 Blades (Spear, Pen and Long Nail File); Brass Linings, Nickel Silver Tips, and Shield; Large Blade Polished on one side.

Weight Per Dozen, 13 oz.



No. 761

Slim Premium Stock Knife; 4 inches long; Bone Stag Handle; 2 Blades (Turkish Clip and Spey); Nickel Silver Linings; Bolsters and Shield; Large Blade Polished on one side.

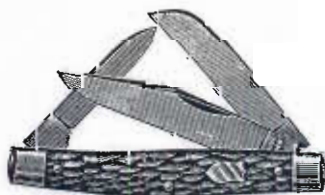
Weight Per Dozen, 1 lb., 8 oz.



No. 124

Serpentine Jack Knife, 3 3/8 inches long; Bone Stag Handle; Half Saber Clip Blade; Brass Linings; Nickel Silver Bolsters, Caps and Shield; Blade Glaze Finished.

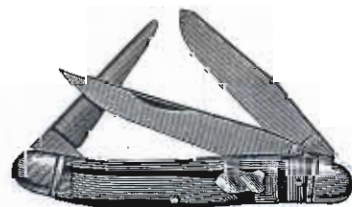
Weight Per Dozen, 1 lb., 12 oz.



No. 833

Serpentine Pattern, 3 5/16 inches long; Bone Stag Handle; 3 Blades (Clip, Sheepfoot and Pen); Brass Linings; Nickel Silver Bolsters and Shield; Large Blade Polished on one side.

Weight Per Dozen, 1 lb., 4 oz.



No. 898

Slim Premium Stock Knife; 3 9/16 inches long; K Horn Celluloid Handle; 3 Blades (Turkish Clip, Spey and Leather P and White); Brass Linings; Nickel Silver Bolsters and Shield; Large Blade Polished on one side.

Weight Per Dozen, 1 lb., 8 oz.

Packed half dozen in a box.

Illustrations are one-half size.



1954

# SCHRADE-WALDEN CUTLERY CORPORATION



Over Fifty Years Of Leadership  
Producing America's Finest  
Quality Knives.



No. 140

Hollow Ground-Stainless Steel  
Length Overall — 8¼ inches  
Length of Blade — 4 inches

Grooved Stratawood Handle with Black and White Decorative Discs on each end. Aluminum Alloy Guard and Bear's Head Butt. Genuine Leather Sheath with snap fastener loop. Packed one in a box — one-half (½) dozen in a carton.  
Weight Per Dozen, 4 lbs., 4 oz.



No. 147

Saber Ground-Carbon Steel  
Length Overall — 8½ inches  
Length of Blade — 4½ inches  
Stratawood Handle with Black and White Decorative Discs on each end. Aluminum Alloy Guard and Plain Butt. Genuine Leather Sheath with snap fastener loop. Packed one in a box — one half (½) dozen in a carton.  
Weight Per Dozen, 5 lbs., 4 oz.



No. 146

Hollow Ground-Stainless Steel  
Length Overall — 8¼ inches  
Length of Blade — 4 inches  
Grooved Stratawood Handle with Black and White Decorative Discs on each end. Aluminum Alloy Guard and Plain Butt. Genuine Leather Sheath with snap fastener loop. Packed one in a box — one half (½) dozen in a carton.  
Weight Per Dozen, 4 lbs., 4 oz.



No. 145

Hollow Ground-Stainless Steel  
Length Overall — 8¼ inches  
Length of Blade — 4 inches

Stratawood Handle with Black and White Decorative Discs on each end. Aluminum Alloy Guard and Plain Butt. Genuine Leather Sheath with snap fastener loop. Packed one in a box — one half (½) dozen in a carton.  
Weight Per Dozen, 4 lbs., 4 oz.



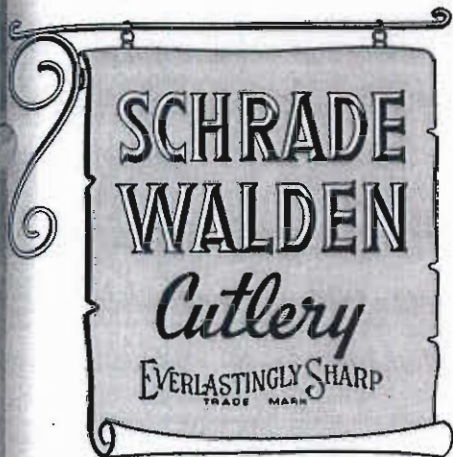
No. 148

Saber Ground-Carbon Steel  
Length Overall — 9 inches  
Length of Blade — 5 inches  
Stratawood Handle with Black and White Decorative Discs on each end. Aluminum Alloy Guard and Plain Butt. Genuine Leather Sheath with snap fastener loop. Packed one in a box — one half (½) dozen in a carton.  
Weight Per Dozen, 5 lbs., 12 oz.

1954

# SCHRADE-WALDEN CUTLERY CORPORATION

## Over Forty Years Of Leadership Producing America's Finest Quality Pocket Knives.



No. 210

Junior Barlow Knife, 2¾ inches long; Ivory Plastic Handle; 1 Spear Blade; Steel Linings; Steel Bolsters; Glaze Finished Blade.

Weight Per Dozen



No. 292

All Stainless Fisherman's Knife, 3⅞ inches long; Bone Stag Handle; 2 Stainless Steel Blades (Large Clip and Disgorger, Scaler-Cap Lifter); Brass Linings; Nickel Silver Bolsters, Caps and Shield; Clip Blade Polished on one side; Packed in Individual Transparent Plastic Display Box.

Weight Per Dozen, 2 lbs., 6 oz.



No. 297

Equal End Jack Knife, 4¼ inches long; Bone Stag Handle; 2 Blades (Spear and Pen); Brass Linings; Nickel Silver Bolsters and Shield; Large Blade Polished on one side.

Weight Per Dozen, 3 lbs., 9 oz.



No. 769

Senator Pattern, 2⅞ inches long; Staggered Handle; 2 Blades (Spear and Pen); Brass Linings; Nickel Silver Tips and Shield; Large Blade Polished on one side.

Weight Per Dozen, 8 oz.



No. 243

Equal End Jack Knife, Slim Pattern; 3½ inches long; STRATA-WOOD Handle; 2 Blades (Clip and Pen); Brass Linings; Nickel Silver Bolsters and Shield; Large Blade Polished on one side.

Weight Per Dozen, 1 lb., 3 oz.



No. 759

Senator Pattern, 3⅞ inches long; Staggered Handle; 2 Blades (Spear and Pen); Brass Linings; Nickel Silver Bolsters and Shield; Large Blade Polished on one side.

Weight Per Dozen, 12 oz.

### "KON-KAV"

TRADE MARK

CONCAVE GROUND

RAZOR KEEN BLADES



No. 863

Balloon Pattern, 3⅝ inches long; Bone Stag Handle; 3 Blades (Large Clip, KON-KAV Ground). Coping Pen and Small Clip; Brass Linings; Nickel Silver Bolsters and Shield; Large Blade Polished on one side.

Weight Per Dozen, 1 lb., 8 oz.



No. 805

Serpentine Pattern, 2¾ inches long; STRATA-WOOD Handle; 3 KON-KAV Ground Blades (Clip, Sheepfoot and Pen); Nickel Silver Bolsters and Shield; Hand Milled Back; Large Blade Polished on one side; Packed in Individual Gift Boxes.

Weight Per Dozen, 1 lb., 3 oz.



No. 880

Premium Stock Knife, Texas Pattern; 4 inches long; Bone Stag Handle; 3 Blades (Large Clip, KON-KAV Ground) Spear and Sheepfoot; Brass Linings; Nickel Silver Bolsters and Shield; Large Blade Polished on one side.

Weight Per Dozen, 2 lbs., 6 oz.

Packed half dozen in a box.

Illustrations are one-half size.



1954

# SCHRADE-WALDEN CUTLERY CORPORATION

## Over Forty Years Of Leadership Producing America's Finest Quality Pocket Knives.



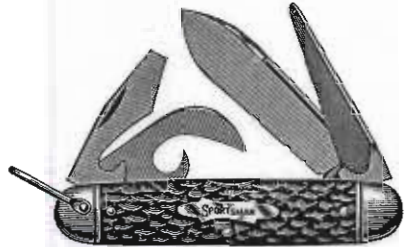
No. 712

Champagne Knife, 3 inches long; Nickel Silver Handle; 2 Blades (Spear and Cork-screw); Caplifter formed by Springs and Handle; Blade Polished on one side; Packed in Individual Gift Box.

No. 712SHA

Same as above, but with Nickel Silver Shackle.

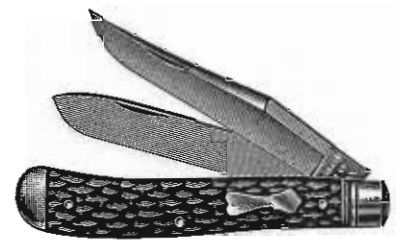
Weight Per Dozen, 1 lb., 5 oz.



No. 920

Sportsman's Knife, 3 3/8 inches long; Bone Stag Handle; 4 Blades (Spear, Punch, Canopener and Screwdriver-caplifter); Brass Linings; Nickel Silver Bolsters, Shield and Shackle; Cutting Blade Polished on one side.

Weight Per Dozen, 3 lbs.



No. 293

Serpentine Jack Knife, 3 3/8 inches long; Bone Stag Handle; 2 Blades (Half Saber Clip and Spey); Brass Linings; Nickel Silver Bolsters, Caps and Shields; Large Blade Polished on one side.

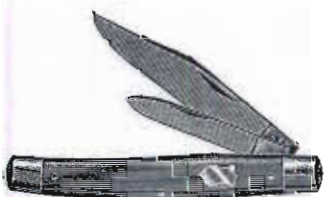
Weight Per Dozen, 2 lbs., 5 oz.



No. 725

Wharnccliffe Pattern, 3-1/16 inches long; PROPWOOD Handle; 2 Blades (Clip and Pen); Brass Linings; Nickel Silver Bolsters and Shield; Large Blade Polished on one side; Packed in Individual Gift Boxes.

Weight Per Dozen, 14 oz.



No. 250

Serpentine Jack Knife, 3-5/16 inches long; PROPWOOD Handle; 2 Blades (Clip and Pen); Brass Linings; Nickel Silver Bolsters and Shield; Large Blade Polished on one side; Packed in Individual Gift Boxes.

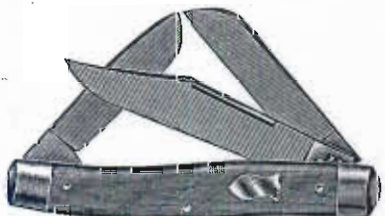
Weight Per Dozen, 1 lb., 7 oz.



No. 820

Serpentine Pattern, 2 3/4 inches long; PROPWOOD Handle; 3 Blades (Clip, Sheep-foot and Pen); Brass Linings; Nickel Silver Bolsters and Shield; Hand-Milled Back; Large Blade Polished on one side; Packed in Individual Gift Boxes.

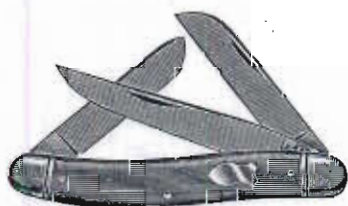
Weight Per Dozen, 1 lb., 3 oz.



No. 822

Premium Stock Knife, Texas Pattern, 4 inches long; PROPWOOD Handle; 3 Blades (Clip, Spey and Sheepfoot); Brass Linings; Nickel Silver Bolsters and Shield; Large Blade Polished on one side; Packed in Individual Gift Boxes.

Weight Per Dozen, 2 lbs., 10 oz.



No. 823

Slim Premium Stock Knife, 3-9/16 inches long; PROPWOOD Handle; 3 Blades (Turkish Clip, Sheepfoot and Spey); Brass Linings; Nickel Silver Bolsters and Shield; Large Blade Polished on one side; Packed in Individual Gift Boxes.

Weight Per Dozen, 1 lb., 12 oz.



No. 821

Serpentine Pattern, 3-9/16 inches long; PROPWOOD Handle; 3 Blades (Saber Clip, Pen and Coping Pen); Brass Linings; Nickel Silver Bolsters and Shield; Blades Full Mirror Polished; Packed in Individual Gift Boxes.

Weight Per Dozen, 1 lb., 14 oz.

Packed half dozen in a box, except as noted.

Illustrations are one-half size.

1954

# SCHRADE-WALDEN

*The World's Finest Knives*

PRICE LIST SW54R

Number	Price	Number	Price	Number	Price	Number	Price
124	3.75	295K	3.50	775 *	4.75	861	5.50
136	3.75	297	5.50	776 *	4.75	863	4.75
149	5.50	708	3.00	777 *	4.75	864	5.50
150	4.75	708Y	3.00	778	3.50	865 *	6.00
151	4.75	709 *	5.00	781 *	4.75	866	4.75
152	5.50	709SHA *	5.00	782 *	4.75	867	4.75
153	6.00	712	4.00	783 *	4.75	876 *	8.00
154	5.50	725 *	4.00	787	3.75	877 *	13.50
155	4.75	735	6.75	793	3.00	880	4.75
163	3.75	736	6.00	804 *	5.00	881	4.75
200 *	5.00	740 *	13.50	805 *	4.75	881K	4.75
204	4.00	741	4.75	808 *	4.75	881Y	4.75
204SHA	4.50	742	4.75	808Y *	4.75	883	4.75
205	4.00	744 *	10.00	809M *	5.00	890	4.00
218	3.00	745	4.75	810	4.00	891	4.75
219	3.00	746 *	6.00	812 *	5.00	895	4.75
225	5.50	747B	4.75	820 *	5.50	896K	4.75
225H	5.50	749	3.50	821 *	5.50	898	4.75
233	3.50	750	5.00	822 *	5.50	899	4.75
234K	3.50	SS755 *	5.00	823 *	5.50	900 *	7.50
236	3.50	757	3.50	825 *	5.00	901 *	7.50
242	3.50	758	3.50	826	5.00	917 *	5.00
243 *	3.50	S758	3.50	832 *	4.00	920	5.50
250 *	4.00	759	3.50	833	4.00	946 *	12.00
256	3.75	760	3.50	834	4.00	946SHA *	12.00
272	3.00	761	4.00	836	5.50	951 *	7.50
272K	3.00	766	3.50	837 *	5.00	967 *	15.00
272Y	3.00	769	3.50	838	5.00	970 *	12.00
292 *	6.00	770	3.50	842	4.00	973	5.50
293	4.00	773	4.00	848 *	5.00	974	4.75
294	4.00	774	3.00	856	4.00		

\* Indicates Individually Boxed Knives.  
 All other knives are packed in the regular Schrade Walden Shelf Box.