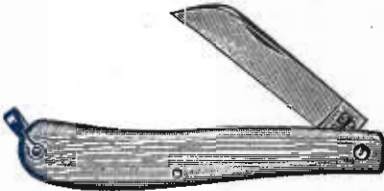


1453

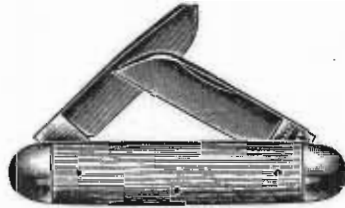
SCHRADE-WALDEN CUTLERY CORPORATION PROFESSIONAL HORTICULTURAL KNIVES



No. 190
(Old No. 1694B)
Budding Knife with Stationary Genuine Ivory Budder; 4 3/8 inches long over all; Handle 3 3/8 inches long; 1 Budding Blade; Brass Lined; Nickle Silver Bolsters; Glaze-Finished Blade; Black Celluloid Handle.
Weight Per Dozen, 1 lb., 3 oz.



No. 195
(Old No. S1944 1/2 WPH)
Florists' Grafting Knife with Shackle; 3 3/8 inches long; 1 Grafting Blade; Brass Linings; Nickle Silver Shackle; Glaze-Fin-



No. 716
(Old No. 7164 1/2 WPH)
Budding and Grafting Knife; 3 3/8 inches long; 2 Blades (Budding Blade and Grafting Blade); Brass Linings; Nickle Silver Bolsters; Glaze-Finished Blades; Ivory Celluloid Handle.
Weight Per Dozen, 1 lb., 14 oz.



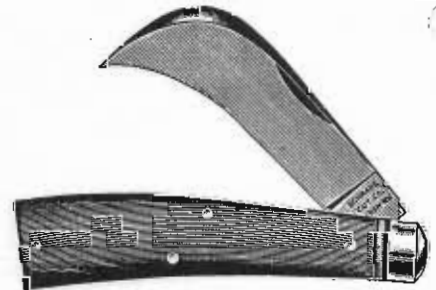
No. 196
(Old No. S1944 3/8 WPH)
Florists' Pruning Knife with Shackle; 3 3/8 inches long; 1 Light Pruning Blade; Brass Linings; Nickle Silver Shackle; Glaze-Finished Blade; Ivory Celluloid Handle; No Imprinting. Imprinting similar to illustration furnished at extra cost.
Weight Per Dozen, 1 lb., 5 oz.



No. 733
Greenskeeper's Knife, 4 inches long; Ivory Plastic Handles; 2 Blades (large Spear Pocket and Special Weeder Blade); Brass Linings; Nickel Silver Bolsters; Glaze Finished Blades.
Weight per dozen, 2 1/2 lbs.



No. 175
(Old No. B1151 1/2)
Grafting Knife; 3 3/8 inches long; 1 Grafting Blade; Brass Linings; Steel Bolsters; Glaze-Finished Blade; Cocobola Handle.
Packed One Dozen in a Box.
No. 176 (Old No. B1154 1/2 W)
Same as above, but with White Celluloid Handle.
Weight Per Dozen, 1 lb., 10 oz.



No. 186
(Old No. 1361)
Large Pruning Knife; 4 7/16 inches long; 1 Large Pruning Blade; Steel Linings; Steel Bolsters; Glaze-Finished Blade; Cocobola Handle.
Weight Per Dozen, 3 lbs., 2 oz.

Budding and Pruning Knife; 4 3/8 inches long; 2 Blades (Budding Blade and Pruning Blade); Brass Linings; Steel Bolsters; Nickle Silver Shield; Glaze-Finished Blades; Bone Stag Handle.
Weight Per Dozen, 2 lbs., 4 oz.

The Schrade-Walden Blade with the Flat Side for more expert work in Budding and Grafting
These blades are specially tempered and ground flat on one side. This results in a super-keen cutting edge. All cuts are uniformly flat and undamaged because the flat side alines itself automatically with the natural cutting direction. These SCHRADE-WALDEN Flat-Sided Blades assure you successful budding or grafting with more "TAKES" due to the perfect joint between scion and stock.

No. 182
(Old No. 1354 1/2 B)

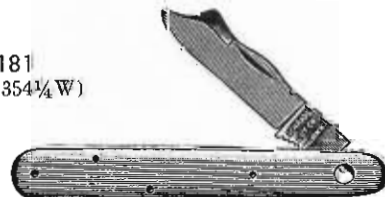


Grafting Knife; 4 inches long; Flat Sided Blade; Thick Brass Lining; Cleaned Inside; Glaze-Finished Blade; Black Celluloid Handle.

No. 183 (Old No. 1354 1/2 W)
Same as above, but with White Celluloid Handle.
Weight Per Dozen, 1 lb., 12 oz.

Packed half dozen in a box, except as noted.

No. 181
(Old No. 1354 1/4 W)



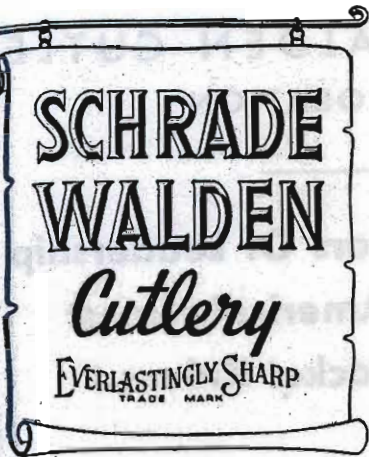
Budding Knife; 4 inches long; Flat Sided Blade with Bark Loosener on Back; Thick Brass Linings; Cleaned Inside; Glaze-Finished Blade; White Celluloid Handle.

No. 180 (Old No. 1354 1/4 B)
Same as above, but with Black Celluloid Handle.
Weight Per Dozen, 1 lb., 12 oz.

Illustrations are one-half size.

1953

SCHRADE-WALDEN CUTLERY CORPORATION



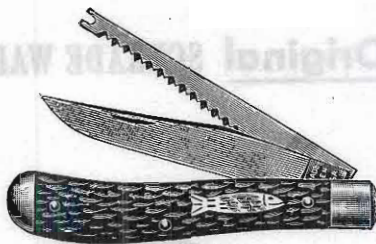
Over Forty Years Of Leadership Producing America's Finest Quality Pocket Knives.



No. 210

Junior Barlow Knife, 2 3/4 inches long; Plastic Handle; 1 Spear Blade; Steel Linings; Steel Bolsters; Glaze Finished Blade.

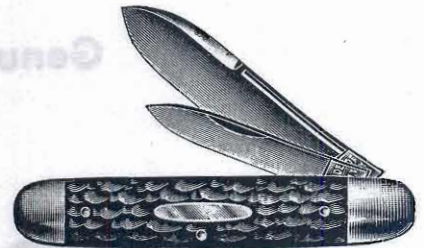
Weight Per Dozen



No. 292

All Stainless Fisherman's Knife, 3 7/8 inches long; Bone Stag Handle; 2 Stainless Steel Blades (Large Clip and Disgorger, Scaler-Cap Lifter); Brass Linings; Nickel Silver Bolsters, Caps and Shield; Clip Blade Polished on one side; Packed in Individual Transparent Plastic Display Box.

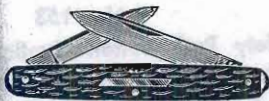
Weight Per Dozen, 2 lbs., 6 oz.



No. 297

Equal End Jack Knife, 4 1/4 inches long; Bone Stag Handle; 2 Blades (Spear and Pen); Brass Linings; Nickel Silver Bolsters and Shield; Large Blade Polished on one side.

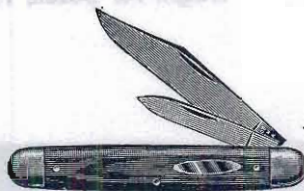
Weight Per Dozen, 3 lbs., 9 oz.



No. 769

Staggered Pattern, 2 7/8 inches long; Staggered Handle; 2 Blades (Spear and Pen); Brass Linings; Nickel Silver Tips and Shield; Large Blade Polished on one side.

Weight Per Dozen, 8 oz.



No. 243

Equal End Jack Knife, Slim Pattern; 3 1/8 inches long; STRATA-WOOD Handle; 2 Blades (Clip and Pen); Brass Linings; Nickel Silver Bolsters and Shield; Large Blade Polished on one side.

Weight Per Dozen, 1 lb., 3 oz.



No. 759

Senator Pattern, 3 1/8 inches long; Staggered Handle; 2 Blades (Spear and Pen); Brass Linings; Nickel Silver Bolsters and Shield; Large Blade Polished on one side.

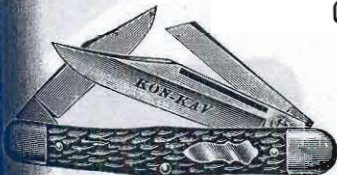
Weight Per Dozen, 12 oz.

"KON-KAV"

TRADE MARK

CONCAVE GROUND

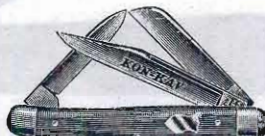
RAZOR KEEN BLADES



No. 863

Concave Ground Pattern, 3 3/8 inches long; Bone Handle; 3 Blades (Large Clip, KON-KAV Ground). Coping Pen and Small Brass Linings; Nickel Silver Bolsters and Shield; Large Blade Polished on one side.

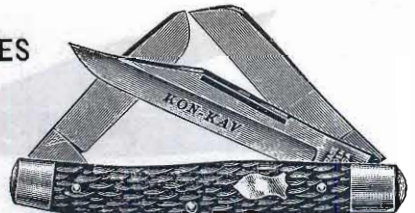
Weight Per Dozen, 1 lb., 8 oz.



No. 805

Serpentine Pattern, 2 3/4 inches long; STRATA-WOOD Handle; 3 KON-KAV Ground Blades (Clip, Sheepfoot and Pen); Nickel Silver Bolsters and Shield; Hand Milled Back; Large Blade Polished on one side; Packed in Individual Gift Boxes.

Weight Per Dozen, 1 lb., 3 oz.



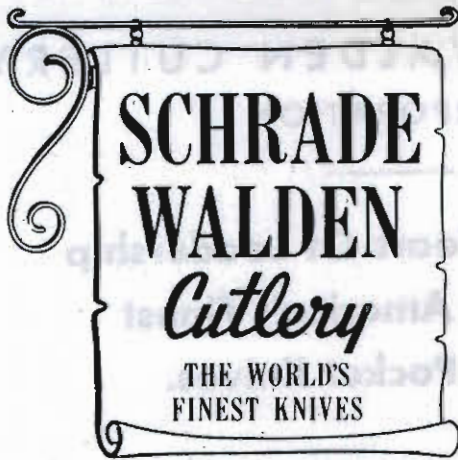
No. 880

Premium Stock Knife, Texas Pattern; 3 1/2 inches long; Bone Stag Handle; 3 Blades (Large Clip, KON-KAV Ground) Spey and Sheepfoot; Brass Linings; Nickel Silver Bolsters and Shield; Large Blade Polished on one side.

Weight Per Dozen, 2 lbs., 6 oz.

Packed half dozen in a box.

Illustrations are one-half size.



SCHRADE-WALDEN CUTLERY CORPORATION

Over Fifty Years Of Leadership
Producing America's Finest
Quality Pocket Knives.

Genuine, Original SCHRADE WALDEN Push Button Knives.



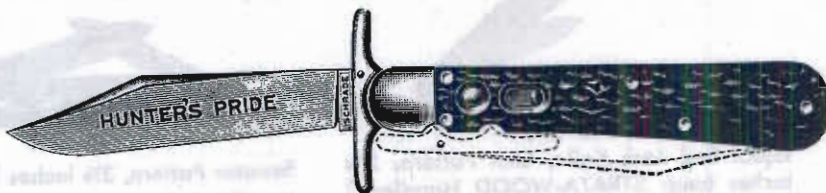
No. 742
(Old No. 7405)
Safety Push Button Knife; 3 $\frac{3}{8}$ inches long; Staggered Handle; 2 Blades (Spear and Pen); Brass Linings; Large Blade Polished on one side.
Weight Per Dozen, 1 lb., 2 oz.



No. 745
(Old No. 7444AC)
Safety Push Button Knife; 2 $\frac{7}{8}$ inches long; Celluloid Handles in Assorted Colors; 2 Blades (Spear and Pen); Brass Linings; Large Blade Polished on one side.
Weight Per Dozen, 11 oz.



No. 150
Safety Push Button Knife, Light Hunting Knife Pattern, 4 inches long; Staggered Handles; Slim Clip Blade; Brass Linings; Nickel Silver Bolsters and Caps; Blade Polished on one side.
Weight Per Dozen, 1 lb., 8 oz.



No. 153
Safety Push Button Hunting Knife, 4 $\frac{7}{8}$ inches long; Staggered Handles; Large Clip Blade; Steel Bolsters and Linings; Nickel Silver Folding Guard; Blade Glaze Finished.
Weight Per Dozen, 4 lbs., 8 oz.
Packed half dozen in a box.



No. 151
(Old No. 1514AC)
Safety Push Button Knife, Light Hunting Knife Type; 4 inches long; Celluloid Handles in Assorted Colors; Slim Clip Blade; Brass Linings; Nickel Silver Bolsters; Blade Polished on one side.
Weight Per Dozen, 1 lb., 8 oz.



No. 154
(Old No. 1545 $\frac{3}{4}$)
Safety Push Button Knife; 4 $\frac{7}{8}$ inches long; Staggered Handle; Large Clip Blade; Steel Linings; Steel Bolsters; Glaze Finished Blade.
Weight Per Dozen, 3 lbs., 5 oz.



No. 155
(Old No. 1555 $\frac{3}{4}$)
Safety Push Button Knife; 4 $\frac{1}{4}$ inches long; Staggered Handle; Large Clip Blade; Steel Linings; Steel Bolsters; Glaze Finished Blade.
Weight Per Dozen, 2 lbs., 13 oz.

Packed half dozen in a box, except as noted.

Illustrations are one-half size.

1953

SCHRADE-WALDEN CUTLERY CORPORATION



Over Forty Years Of Leadership Producing America's Finest Quality Pocket Knives.



No. 712

Champagne Knife, 3 inches long; Nickel Silver Handle; 2 Blades (Spear and Corkscrew); Caplifter formed by Springs and Handle; Blade Polished on one side; Packed in Individual Gift Box.

No. 712SHA

Same as above, but with Nickel Silver Shackle.

Weight Per Dozen, 1 lb., 5 oz.



No. 920

Sportsman's Knife, 3 3/8 inches long; Bone Stag Handle; 4 Blades (Spear, Punch, Canopener and Screwdriver-caplifter); Brass Linings; Nickel Silver Bolsters, Shield and Shackle; Cutting Blade Polished on one side.

Weight Per Dozen, 3 lbs.



No. 293

Serpentine Jack Knife, 3 3/8 inches long; Bone Stag Handle; 2 Blades (Half Saber Clip and Spey); Brass Linings; Nickel Silver Bolsters, Caps and Shields; Large Blade Polished on one side.

Weight Per Dozen, 2 lbs., 5 oz.



No. 725

Wharnccliffe Pattern, 3-1/16 inches long; PROPWOOD Handle; 2 Blades (Clip and Pen); Brass Linings; Nickel Silver Bolsters and Shield; Large Blade Polished on one side; Packed in Individual Gift Boxes.

Weight Per Dozen, 14 oz.



No. 250

Serpentine Jack Knife, 3-5/16 inches long; PROPWOOD Handle; 2 Blades (Clip and Pen); Brass Linings; Nickel Silver Bolsters and Shield; Large Blade Polished on one side; Packed in Individual Gift Boxes.

Weight Per Dozen, 1 lb., 7 oz.



No. 820

Serpentine Pattern, 2 3/4 inches long; PROPWOOD Handle; 3 Blades (Clip, Sheepfoot and Pen); Brass Linings; Nickel Silver Bolsters and Shield; Hand-Milled Back; Large Blade Polished on one side; Packed in Individual Gift Boxes.

Weight Per Dozen, 1 lb., 3 oz.



No. 822

Premium Stock Knife, Texas Pattern, 4 inches long; PROPWOOD Handle; 3 Blades (Clip, Spey and Sheepfoot); Brass Linings; Nickel Silver Bolsters and Shield; Large Blade Polished on one side; Packed in Individual Gift Boxes.

Weight Per Dozen, 2 lbs., 10 oz.



No. 823

Slim Premium Stock Knife, 3-9/16 inches long; PROPWOOD Handle; 3 Blades (Turkish Clip, Sheepfoot and Spey); Brass Linings; Nickel Silver Bolsters and Shield; Large Blade Polished on one side; Packed in Individual Gift Boxes.

Weight Per Dozen, 1 lb., 12 oz.



No. 821

Serpentine Pattern, 3-9/16 inches long; PROPWOOD Handle; 3 Blades (Saber Clip, Pen and Copping Pen); Brass Linings; Nickel Silver Bolsters and Shield; Blades Full Mirror Polished; Packed in Individual Gift Boxes.

Weight Per Dozen, 1 lb., 14 oz.

1953

SCHRADE-WALDEN CUTLERY CORPORATION



Over Fifty Years Of Leadership
Producing America's Finest
Quality Knives.



No. 140

Hollow Ground-Stainless Steel
Length Overall — 8¼ inches
Length of Blade — 4 inches

Grooved Stratawood Handle with Black and White Decorative Discs on each end. Aluminum Alloy Guard and Bear's Head Butt. Genuine Leather Sheath with snap fastener loop. Packed one in a box — one-half (½) dozen in a carton.
Weight Per Dozen, 4 lbs., 4 oz.



No. 147

Saber Ground-Carbon Steel
Length Overall — 8½ inches
Length of Blade — 4½ inches

Stratawood Handle with Black and White Decorative Discs on each end. Aluminum Alloy Guard and Plain Butt. Genuine Leather Sheath with snap fastener loop. Packed one in a box — one half (½) dozen in a carton.
Weight Per Dozen, 5 lbs., 4 oz.



No. 146

Hollow Ground-Stainless Steel
Length Overall — 8¼ inches
Length of Blade — 4 inches

Grooved Stratawood Handle with Black and White Decorative Discs on each end. Aluminum Alloy Guard and Plain Butt. Genuine Leather Sheath with snap fastener loop. Packed one in a box — one half (½) dozen in a carton.
Weight Per Dozen, 4 lbs., 4 oz.



No. 145

Hollow Ground-Stainless Steel
Length Overall — 8¼ inches
Length of Blade — 4 inches

Stratawood Handle with Black and White Decorative Discs on each end. Aluminum Alloy Guard and Plain Butt. Genuine Leather Sheath with snap fastener loop. Packed one in a box — one half (½) dozen in a carton.
Weight Per Dozen, 4 lbs., 4 oz.



No. 148

Saber Ground-Carbon Steel
Length Overall — 9 inches
Length of Blade — 5 inches

Stratawood Handle with Black and White Decorative Discs on each end. Aluminum Alloy Guard and Plain Butt. Genuine Leather Sheath with snap fastener loop. Packed one in a box — one half (½) dozen in a carton.
Weight Per Dozen, 5 lbs., 12 oz.

1953

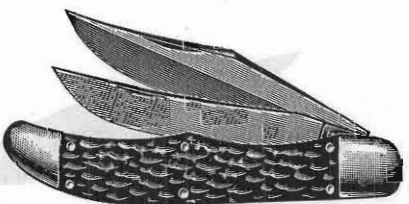
SCHRADE-WALDEN CUTLERY CORPORATION



No. 163

Rope or Hawser Knife, $4\frac{7}{8}$ inches long; Cocobola Handle; 1 Large Square Point Blade, Steel linings; Steel Bolsters; Glaze Finished Blade.

Weight Per Dozen, 3 lbs.



No. 225

Hunter's and Trapper's Knife, $5\frac{1}{4}$ inches long; Staggered Handles; 2 Blades (Large Full Saber Clip and Large Skinning Blade); Brass Linings; Nickel Silver Bolsters and Caps; Glaze Finished Blades.

Weight Per Dozen, 4 lbs., 12 oz.

No. 225H—Same as above with Hole for attaching thong.

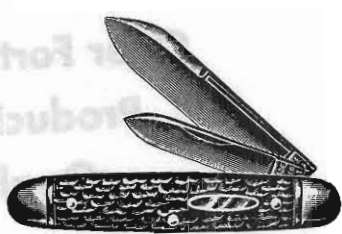


No. 170

Stationary Blade Pruning Knife, $7\frac{5}{8}$ inches long overall; Round Hardwood Handle with Special Feature for firm gripping; Compression Rivets; Blade Glaze Finished.

Weight Per Dozen, 2 lbs., 6 oz.

Packed half dozen in a box, except as noted.



No. 256

Equal End Jack Knife, $3\frac{3}{8}$ inches long, Bone Stag Handle; 2 Blades (Spear and Pen); Brass Linings; Nickel Silver Bolsters and Shield; Large Blade Polished on one side.

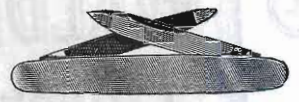
Weight Per Dozen, 2 lbs.



No. 736

Marline Spike Knife, $4\frac{1}{8}$ inches long; Stainless Steel Handle; Large Stainless Steel Sheepfoot Blade and Stainless Steel Marline Spike; Nickel Silver Shackle; Cutting Blade Glaze Finished.

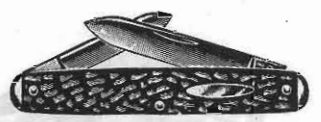
Weight Per Dozen, 4 lbs.



No. 778

Senator Pattern, $2\frac{7}{8}$ inches long; Stainless Steel Handle; Stainless Steel Spear Blade and Flexible Nail File; Spear Blade Polished on one side.

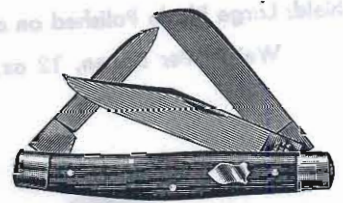
Weight Per Dozen, 8 oz.



No. 757

Senator Pattern, $3\frac{1}{8}$ inches long; Staggered Handle; 2 Blades (Spear and Pen); Brass Linings; Nickel Silver Tips and Shield; Large Blade Polished on one side.

Weight Per Dozen, 12 oz.



No. 832

Serpentine Pattern; $3\frac{5}{8}$ inches long; Propwood Handle; 3 Blades (Clip, Sheepfoot and Pen); Brass Linings; Nickel Silver Bolsters and Shield; Large Blade Polished on one side.

Weight Per Dozen, 1 lb., 4 oz.



No. 173

Fixed Blade Grafting Knife, $6\frac{7}{8}$ inches long; One Carbon Steel Grafting Blade $2\frac{3}{8}$ inches long; Imported Coccolawood Handles; Compression Rivets; Blade Glaze Finished. Packed one dozen to a chipboard box.

Weight Per Dozen, 1 lb.

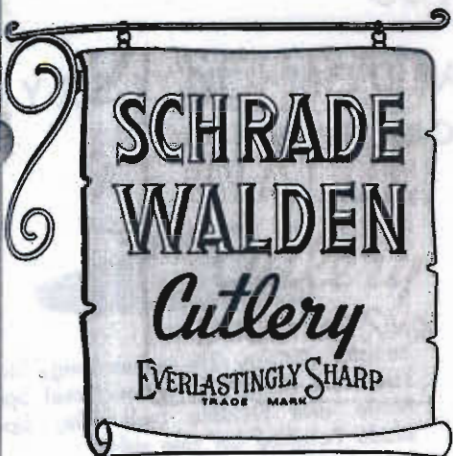


No. 174

Fixed Blade Budding Knife, 6 inches long; One Carbon Steel Budding Blade $2\frac{1}{2}$ inches long; Imported Coccolawood Handles; Compression Rivets; Blade Glaze Finished. Packed one dozen to a chipboard box.

Weight Per Dozen, 1 lb.

Illustrations are one-half size



SCHRADE-WALDEN CUTLERY CORPORATION

Over Forty Years Of Leadership
Producing America's Finest
Quality Pocket Knives.



No. 758

Senator Pattern 3½ inches long; Marine Pearl Handle; 2 Blades (Spear and Pen); Brass Linings; Nickel Silver Tips and Shield; Large Blade Polished on one side.

Weight Per Dozen, 12 oz.



No. 773

Congress Pattern, 3½ inches long; Bone Stag Handle; 2 Blades (Sheepfoot and Pen); Brass Linings; Nickel Silver Shield; Steel Bolsters; Large Blade Polished on one side.

Weight Per Dozen, 1 lb., 6 oz.



No. 973

Congress Pattern, 3½ inches long; Bone Stag Handle; 4 Blades (2 Sheepfoot Blades and 2 Pen Blades); Brass Linings; Nickel Silver Shield; Steel Bolsters; Large Blade Polished on one side.

Weight Per Dozen, 1 lb., 12 oz.

Steel

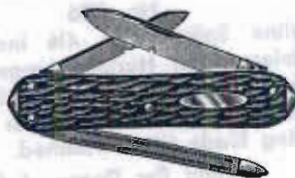


No. 219

Small Serpentine Jack Knife; 2¾ inches long; Staggered Handle; 2 Blades (Clip and Pen); Brass Linings; Nickel Silver Bolsters and Shield; Large Blade Polished on one side.

Weight Per Dozen, 14 oz.

No. 218 — Same as above but with Marine Pearl Handle.



No. 864

Sunfish Lobster Pattern; 3 inches long; Staggered Handle; 3 Blades (Spear, Pen and Long Nail File); Brass Linings, Nickel Silver Tips, and Shield; Large Blade Polished on one side.

Weight Per Dozen, 13 oz.



No. 761

Slim Premium Stock Knife; 4 inches long; Bone Stag Handle; 2 Blades (Turkish Clip and Spey); Nickel Silver Linings; Bolsters and Shield; Large Blade Polished on one side.

Weight Per Dozen, 1 lb., 8 oz.



No. 124

Serpentine Jack Knife, 3¾ inches long; Bone Stag Handle; Half Saber Clip Blade; Brass Linings; Nickel Silver Bolsters, Caps and Shield; Blade Glaze Finished.

Weight Per Dozen, 1 lb., 12 oz.



No. 833

Serpentine Pattern, 3 5/16 inches long; Bone Stag Handle; 3 Blades (Clip, Sheepfoot and Pen); Brass Linings; Nickel Silver Bolsters and Shield; Large Blade Polished on one side.

Weight Per Dozen, 1 lb., 4 oz.



No. 898

Slim Premium Stock Knife; 3 9/16 inches long; K Horn Celluloid Handle; 3 Blades (Turkish Clip, Spey and Leather Pind Wh); Brass Linings; Nickel Silver Bolsters and Shield; Large Blade Polished on one side.

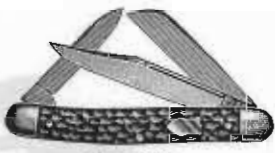
Weight Per Dozen, 1 lb., 8 oz.

1953

SCHRADE-WALDEN CUTLERY CORPORATION



Over Forty Years Of Leadership Producing America's Finest Quality Pocket Knives.



No. 808
(Old No. 8)

Serpentine Pattern; 2 1/4 in. long; Staggered Handle; 3 Blades (Clip, Sheepfoot and Pen); Brass Linings; Nickel Silver Bolsters and Shield; Milled Backs; Large Blade Polished on one side; Each Knife Packed with Purse in Individual Box.
Weight Per Dozen, 1 lb., 3 oz.



No. 810
(Old No. 8103)

Senator Pattern; 3 1/8 inches long; Bone Stag Handle; 3 Blades (Spear, Sheep-foot and Pen); Brass Linings; Nickel Silver Bolsters and Shield; Large Blade Polished on one side.
Weight Per Dozen, 1 lb., 4 oz.



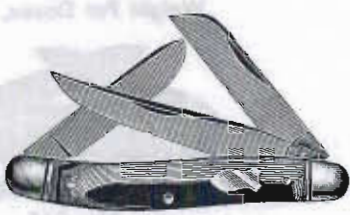
No. 842
(Old No. M8424MT)

Senator Pattern; 3 1/8 inches long; Marine Pearl Handle; 3 Blades (Spear, Pen and Long Flexible Nail File); Brass Linings; Nickel Silver Tips and Shield; Large Blade Polished on one side.
Weight Per Dozen, 1 lb., 1 oz.



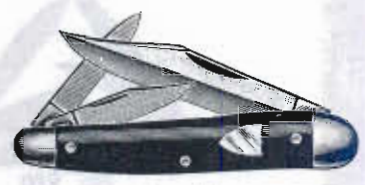
No. 881
(Old No. 8813(8113))

Premium Stock Knife, Texas Pattern; 4 in. long; Bone Stag Handle; 3 Blades (Clip, Spey and Sheepfoot); Brass Linings; Nickel Silver Bolsters and Shield; Large Blade Polished on one side.
Weight Per Dozen, 2 lbs., 6 oz.



No. 896K
(Old No. 8964K)

Slim Premium Stock Knife; 3 9/16 inches long; K-Horn Celluloid Handle; 3 Blades (Clip, Sheepfoot and Spey); Brass Linings; Nickel Silver Bolsters and Shield; Large Blade Polished on one side.



No. 836
(Old No. 8364 3/8 B)

Serpentine Pattern; 3 9/16 inches long; Black Celluloid Handle; 3 Blades (Large Sabre Clip, Small Clip and Pen); Brass Linings; Nickel Silver Bolsters and Shield; Blades Full Polished.
Weight Per Dozen, 1 lb., 10 oz.



No. 804
(Old No. 4)

Mechanics Knife; 3 7/8 in. long; Bone Stag Handle; 3 Blades (Large Sabre Clip, Small Clip, and Coping Pen); Brass Linings; Nickel Silver Bolsters and Shield; Large Blade Polished on one side; Individually Packed with Purse.
Weight Per Dozen, 2 lbs., 13 oz.

Same as above, but with Bone Stag Handle.
Weight Per Dozen, 1 lb., 8 oz.



No. 883
(Old No. R8833)

Premium Stock Knife; 4 inches long; Bone Stag Handle; 3 Blades (Clip, Spey and Leather Punch); Brass Linings; Nickel Silver Bolsters and Shield; Large Blade Polished on one side.
Weight Per Dozen, 2 lbs., 4 oz.



No. 136
(Old No. 1361SHA)

Linemen's Skinning Knife; with Shack; 4 7/16 inches long; Cocobola Handle; 1 Large Skinning Blade; Steel Lining; Steel Bolsters; Glaze Finished Blade.
Weight Per Dozen, 3 lbs., 8 oz.

Packed half dozen in a box, except as noted.

Illustrations are one-half size.

SCHRADE-WALDEN CUTLERY CORPORATION

Over Forty Years Of Leadership
Producing America's Finest
Quality Pocket Knives.



No. 708
(Old No. 71085 $\frac{3}{4}$)

Serpentine Pen Knife; 2 $\frac{3}{4}$ inches long; Staggered Handle; 2 Blades (Clip and Pen); Brass Linings; Nickel Silver Bolsters and Shield; Large Blade Polished on one side.

Weight Per Dozen, 10 oz.



No. 793
(Old No. M7934MT)

Slim Senator Pattern; 2 $\frac{1}{2}$ inches long; Solid Marine Pearl Handle; 2 Blades (Spear and Flexible Nail File); Nickel Silver Linings and Tips; Large Blade Polished on one side.

No. 793SHA
(Old No. M7934MTSHA)
Same Knife with Nickel Silver Shackle.
Weight Per Dozen, 8 oz.



No. 770
(Old No. M7705T)

Senator Pattern; 2 $\frac{3}{8}$ inches long; Staggered Handle; 2 Blades (Spear and Flexible Nail File); Brass Linings; Nickel Silver Tips and Shield; Large Blade Polished on one side.

Weight Per Dozen, 9 oz.



No. 970
(Old No. 9706T)

Senator Pattern; 2 $\frac{7}{8}$ inches long; Mother of Pearl Handle; 4 Blades (Spear, Pen, Flexible Manicure File and Surgical Lance Blade); Nickel Silver Linings Milled; Nickel Silver Tips; Blades Full Polished; Each Knife Packed with Purse in Individual Box.

Weight Per Dozen, 12 oz.



No. 865
(Old No. 8654MT)

Sunfish Lobster Pattern; 3 inches long; Marine Pearl Handle; 3 Blades (Spear, Pen and Long Nail File); Nickel Silver Tips; Brass Linings; Large Blade Polished on one side. Each Knife Packed with Purse in Individual Box.

Weight Per Dozen, 13 oz.



No. 760
(Old No. 7424 $\frac{3}{4}$ YB)

Senator Pattern; 3 $\frac{1}{8}$ inches long; Mottled Brown Horn Celluloid Handle; 2 Blades (Clip and Pen); Brass Linings; Nickel Silver Bolsters and Shield; Large Blade Polished on one side.

Weight Per Dozen, 14 oz.



No. 946SHA
(Old No. 46)

Senator Pattern; 2 $\frac{7}{8}$ inches long; Stainless Steel Engine Turned Handle; 4 Blades (Stainless Steel Spear, Stainless Steel Pen, Stainless Steel Lance Blade and Flexible Nail File); Blades Full Polished; Each Knife Packed with Purse in Individual Box; with Shackle.

No. 946
(Old No. 146)

Same as above, without Shackle.
Weight Per Dozen, 1 lb., 9 oz.



No. 709SHA
(Old No. 48)

Senator Pattern; 3 $\frac{1}{16}$ inches long; Stainless Steel Engine Turned Handle; 1 Stainless Steel Spear Blade and Flexible Nail File; with Shackle; Large Blade Polished on one side; Each Knife Packed with Purse in Individual Box.

No. 709
(Old No. 148)

Same as above, without Shackle.
Weight Per Dozen, 1 lb., 2 oz.



No. SS755
(Old No. SSR7429S1)

Ring Opening Knife, Senator Pattern; Turn the Ring and the Blade Opens; 3 $\frac{1}{8}$ inches long; Stainless Steel Handle; 2 Stainless Steel Blades (Spear and Pen); Large Blade Polished on one Side. Each Knife Packed with Purse in Individual Box.

Weight Per Dozen, 11 oz.

1953

SCHRADE-WALDEN CUTLERY CORPORATION

Over Forty Years Of Leadership Producing America's Finest Quality Pocket Knives.



No. 775

Slim Senator Pattern, 2 7/8 inches long; K-Horn Celluloid Handles; 2 Stainless Steel Blades (Spear and Pen); Nickel Silver Tips, Shield and Linings; Stainless Steel Spring. Large Blade Polished on one side. Packed in individual gift boxes, six boxes to a tray.

Weight Per Dozen, 9 oz.

No. 776 — Same as above but with Solid Marine Pearl Handles.

No. 777 — Same as above but with Maize Celluloid Handles.



No. 749

Office Knife, 3-7/16 inches long; Ivory Celluloid Handles stamped as shown above; 2 Blades (Spear and Office Blade); Brass Linings; Spear Blade Polished on one side.

Weight Per Dozen, 17 oz.



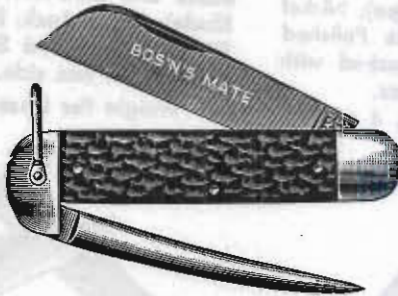
No. 782

Serpentine Pen Knife, 2 3/4 inches long Solid Marine Pearl Handles; 2 Stainless Steel Blades (Clip and Pen); Brass Linings; Nickel Silver Bolsters and Shield; Stainless Steel Spring. Large Blade Polished on one side. Packed in individual gift boxes, six boxes to a tray.

Weight Per Dozen, 10 oz.

No. 781 — Same as above but with K-Horn Celluloid Handles.

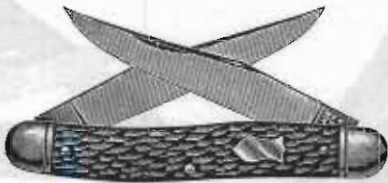
No. 783 — Same as above but with Maize Celluloid Handles.



No. 735

Marline Spike Knife, 4 1/8 inches long; Unbreakable Staggered Handles; Large Sheepfoot Blade and Marline Spike; Brass Linings; Nickel Silver Bolsters, Caps and Shackle; Cutting Blade Glaze Finished.

Weight Per Dozen, 4 lbs.



No. 787

Muskrat Knife, 4 inches long; Bone Stag Handles; 2 Skinning Blades; Brass Linings; Nickel Silver Bolsters and Shield; Master Blade Polished on one side.

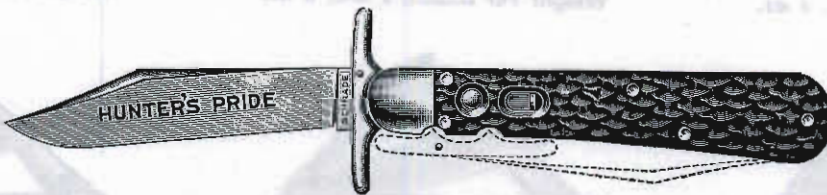
Weight Per Dozen, 1 lb., 12 oz.



No. 150

Safety Push Button Knife, Light Hunting Knife Pattern, 4 inches long; Staggered Handles; Slim Clip Blade; Brass Lining; Nickel Silver Bolsters and Caps; Blade Polished on one side.

Weight Per Dozen, 1 lb., 8 oz.



No. 153

Safety Push Button Hunting Knife, 4 7/8 inches long; Staggered Handles; Large Clip Blade; Steel Bolsters and Linings; Nickel Silver Folding Guard; Blade Glaze Finished.

Weight Per Dozen, 4 lbs., 8 oz.



No. 152

Safety Push Button Knife, Light Hunting Knife Pattern, 4 inches long; Celluloid Handles in Assorted Colors; Slim Clip Blade; Brass Linings; Nickel Silver Bolsters and Caps; Blade Polished on one side.

Weight Per Dozen, 1 lb., 8 oz.

No. 149 — Same as above but with Staggered Handles.

Packed half dozen in a box, except as noted.

Illustrations are one-half size.

SCHRADE-WALDEN CUTLERY CORPORATION

**SCHRADE
WALDEN**
Cutlery
EVERLASTINGLY SHARP
TRADE MARK

**Over Forty Years Of Leadership
Producing America's Finest
Quality Pocket Knives.**



No. 200

Smokers' Knife, Senator Pattern, 3 inches long; Dual Nickel Silver Handle; 2 Blades (Spear Pocket Blade and Piercer - for piercing cigars or cleaning pipe); Nickel Silver Tamper on end; Blade Polished on one side. Each knife packed with flannel purse in individual box.

Weight Per Dozen, 1 lb., 4 oz.



No. 204

(Old No. C2041SD)

Electrician's Knife (Lock-back), 3 3/4 inches long; Cocobola Handle; 2 Blades (Spear Blade and Screwdriver - wire scrapper Blade); Center Lock; Brass Linings; Nickel Silver Bolsters and Shield; Large Blade Polished on one side.

Weight Per Dozen, 3 lbs., 0 oz.



No. 812

Champagne Jr. Knife, 3 inches long; Nickel Silver Handle; 3 Blades (Spear Blade, Flexible Manicure File and Cor screw); Caplift Formed by Springs at Handle; Spear Blade Polished on one side. Each knife packed with flannel purse in individual box.

Weight Per Dozen, 1 lb., 10 oz.

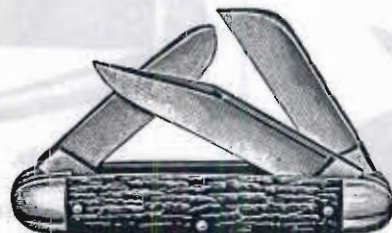


No. 834

(Old No. 8343)

Serpentine Knife, 3 5/16 inches long; Bone Stag Handle; 3 Blades (Clip, Spey and Pen); Brass Linings; Nickel Silver Bolsters and Shield; Large Blade Polished on one side.

Weight Per Dozen, 1 lb., 4 oz.



No. 856

(Old No. S8563 3/4)

Cattle Knife, 3 3/8 inches long; Bone Stag Handle; 3 Blades (Clip, Sheepfoot and Spey); Brass Linings; Nickel Silver Bolsters; Large Blade Polished on one side.

Weight Per Dozen, 2 lbs., 0 oz.

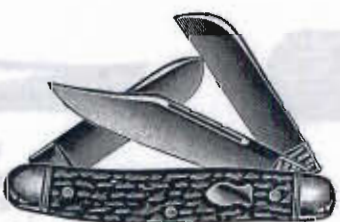


No. 861

(Old No. 8613)

Slim Premium Stock Knife, 4 inches long; Bone Stag Handle; 3 Blades (Turkish C, Sheepfoot and Spey); Nickel Silver Bolsters and Shield; Milled Back Large Blade Polished on one side.

Weight Per Dozen, 1 lb., 10 oz.

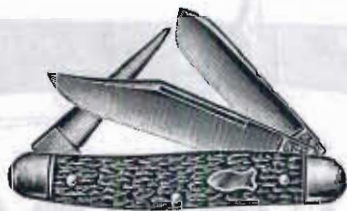


No. 890

(Old No. 8903)

Premium Stock Knife, 3 1/2 inches long; Bone Stag Handle; 3 Blades (Clip, Sheepfoot and Spey); Brass Linings; Nickel Silver Bolsters and Shield; Large Blade Polished on one side.

Weight Per Dozen, 1 lb., 12 oz.



No. 891

(Old No. 8913)

Premium Stock Knife, 3 1/2 inches long; Bone Stag Handle; 3 Blades (Clip, Spey and Leather Punch); Brass Linings; Nickel Silver Bolsters and Shield; Large Blade Polished on one side.

Weight Per Dozen, 1 lb., 12 oz.



No. 899

(Old No. 8993 3/4)

Slim Premium Stock Knife, 3 9/16 inches long; Bone Stag Handle; 3 Blades (Turkish C, Spey and Leather Punch); Brass Linings; Nickel Silver Bolsters and Shield; Large Blade Polished on one side.

Weight Per Dozen, 1 lb., 12 oz.

Packed 1/2 dozen in a box, except as noted.

Illustrations are one-half size

1953

SCHRADE-WALDEN CUTLERY CORPORATION



Over Forty Years Of Leadership Producing America's Finest Quality Pocket Knives.



No. 272
(Old No. 2725 $\frac{1}{4}$)

Serpentine Jack Knife; 2 $\frac{3}{8}$ inches long; Staggered Handle; 2 Blades (Clip and Pen); Brass Linings; Nickel Silver Bolsters, Caps, and Shield; Large Blade Polished on one side.
Weight Per Dozen, 15 oz.



No. 766
(Old No. R7664 $\frac{1}{4}$ B)

Wharnclyffe Pattern; 3 $\frac{1}{16}$ inches long; Black Celluloid Handle; 2 Blades (Clip and Pen); Brass Linings; Nickel Silver Bolsters and Shield; Large Blade Polished on one side.
Weight Per Dozen, 11 oz.



No. 774
(Old No. 7743)

Congress Pattern; 3 inches long; Bone Stag Handle; 2 Blades (Sheepfoot and Pen); Brass Linings; Nickel Silver Bolsters; Large Blade Polished on one side.
Weight Per Dozen, 11 oz.



No. 295K
(Old No. 2954 $\frac{3}{4}$ K)

Serpentine Jack Knife; 3 inches long; K-Horn Celluloid Handle; 2 Blades (Clip and Pen); Brass Linings; Nickel Silver Bolsters, Caps and Shield; Large Blade Polished on one side.
Weight Per Dozen, 1 lb., 4 oz.



No. 974
(Old No. 9743)

Congress Pattern; 3 inches long; Bone Stag Handle; 4 Blades (2 Sheepfoot Blades and 2 Pen Blades); Brass Linings; Nickel Silver Bolsters; Large Blade Polished on one side.
Weight Per Dozen, 1 lb., 1 oz.



No. 242
(Old No. 2423)

Equal End Jack Knife, Slim Pattern; 3 $\frac{1}{8}$ inches long; Bone Stag Handle; 2 Blades (Spear and Pen); Brass Linings; Nickel Silver Bolsters and Shield; Large Blade Polished on one side.
Weight Per Dozen, 1 lb., 3 oz.



No. 234K
(Old No. 2344K)

Serpentine Jack Knife; 3 $\frac{5}{16}$ inches long; K-Horn Celluloid Handle; 2 Blades (Clip and Pen); Brass Linings; Nickel Silver Bolsters and Shield; Large Blade Polished on one side.
Weight Per Dozen, 1 lb., 4 oz.



No. 236
(Old No. 2364 $\frac{3}{4}$ B)

Serpentine Jack Knife; 3 $\frac{9}{16}$ inches long; Black Celluloid Handle; 2 Blades (Clip and Pen); Brass Linings; Nickel Silver Bolsters and Shields; Large Blade Polished on one side.
Weight Per Dozen, 1 lb., 8 oz.



No. 294
(Old No. 2943 $\frac{3}{4}$)

Serpentine Jack Knife; 3 $\frac{3}{8}$ inches long; Bone Stag Handle; 2 Blades (Half Clip and Pen); Brass Linings; Nickel Silver Bolsters, Caps and Shield; Large Blade Polished on one side.
Weight Per Dozen, 2 lbs., 5 oz.

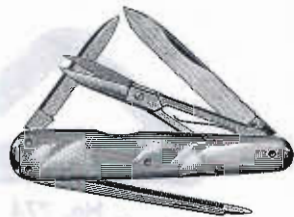
Packed half dozen in a box.

Illustrations are one-half size.

SCHRADE-WALDEN CUTLERY
CORPORATION

Quality Gift Knives

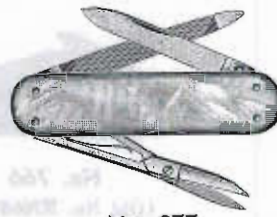
INDIVIDUALLY PACKED IN HANDSOME
LEATHERETTE GIFT BOXES



No. 967

Scissors Knife, Sleeveboard Lobster Pattern; 3 inches long; Manicure File, Pen and Spear Pocket Blades and Scissors; Nickel Silver Linings and Tips; Cleaned inside; Blades Full Polished; Mother of Pearl Handle.

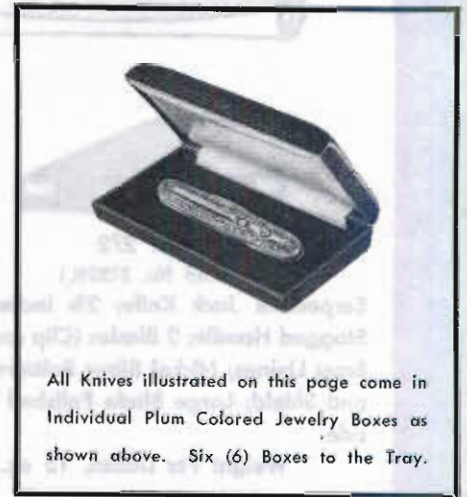
Weight Per Dozen, 1 lb., 14 oz.



No. 877

Scissors Knife, Lobster Pattern, 2 7/8 inches long; Flexible Manicure File, Spear Pocket Blade and Scissors; Nickel Silver Lined; Cleaned inside; Blades Full Polished; Mother of Pearl Handle.

Weight Per Dozen, 1 lb. 9 oz.



All Knives illustrated on this page come in Individual Plum Colored Jewelry Boxes as shown above. Six (6) Boxes to the Tray.



No. 809M
"ESQUIRE"

Serpentine Pattern, 2 3/4 inches long; Marine Pearl Handle; Milled Back; 3 Blades (Clip, Pen and Flexible File); Brass Linings; Nickel Silver Bolsters and Shield; Large Blade Polished on one side.

Weight Per Dozen, 12 oz.



No. 848

"COSMOPOLITAN"

Sleeveboard Lobster Pattern, 2 3/4 inches long; Marine Pearl Handle; 3 Blades (Spear, Pen and Nail File); Nickel Silver Linings; Large Blade Polished on one side.

Weight Per Dozen, 12 oz.



No. 746

"EXECUTIVE"

Safety Push Button Knife, 2 7/8 inches long; Stainless Steel Handle; 2 Blades (Spear and Nail File); Nickel Silver Linings; Blades Full Polished.

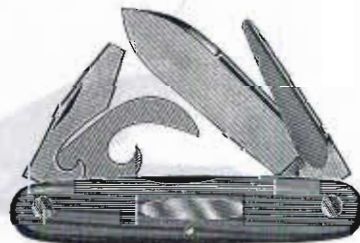
Weight Per Dozen, 12 oz.



No. 837
"WHITTILER"

Serpentine Pattern, 3-9/16 inches long; Bone Stag Handle; Milled Back; 3 Blades (Saber Clip, Pen and Coping); Brass Linings; Nickel Silver Bolsters and Shield; Blades Full Polished.

Weight Per Dozen, 1 lb., 14 oz.



No. 917

"SPORTSTER"

Shadow Pattern, 3 3/8 inches long; Red Fibre Handle; Milled Back; 4 Blades (Spear, Leather Punch, Canopener and Screwdriver-caplifter); Brass Linings; Nickel Silver Shield; Large Blade Polished on one side.

Weight Per Dozen, 3 lbs.



No. 825

"WESTERNER"

Slim Premium Pattern, 3-9/16 inches long; Bone Stag Handle; Milled Back; 3 Stainless Steel Blades (Clip, Sheepfoot and Spey); Nickel Silver Linings; Bolsters and Shield; Large Blade Polished on one side.

Weight Per Dozen, 1 lb., 14 oz.

Number	Price Pr.Dz.	Number	Price Pr.Dz.	Number	Price Pr.Dz.	Number	Price Pr.Dz.
110W	\$11.00	294	\$21.75	769	\$18.00	836	\$29.00
124	20.00	295K	18.00	770	18.00	837	32.50
136	20.00	297	29.00	773	21.75	838	32.50
149	29.00	708	18.00	774	18.00	842	21.75
150	25.25	709	32.50	775	25.25	848	32.50
151	25.25	709SHA	32.50	776	25.25	856	21.75
152	29.00	8709	32.50	777	25.25	861	29.00
153	32.50	712	21.75	778	18.00	863	25.25
154	29.00	712SHA	23.50	781	25.25	864	29.00
155	25.25	725	21.75	782	25.25	865	36.00
163	20.00	735	36.00	783	25.25	876	43.25
200	32.50	736	32.50	787	20.00	877	72.00
204	21.75	740	72.00	793	18.00	880	25.25
204SHA	23.50	741	25.25	793SHA	20.00	881	25.25
205	21.75	742	25.25	804	32.50	883	25.25
210B or W	11.00	744	54.00	805	25.25	890	21.75
212B or W	11.00	745	25.25	808	25.25	891	25.25
214B or W	11.00	746	32.50	809M	32.50	895	25.25
218	18.00	747B	25.25	810	21.75	896K	25.25
219	18.00	749	18.00	812	32.50	898	25.25
225	29.00	750	27.00	820	29.00	899	25.25
234K	18.00	88755	32.50	821	29.00	917	32.50
236	18.00	757	18.00	822	29.00	920	29.00
242	18.00	758	18.00	823	29.00	946	65.00
243	18.00	8758	18.00	825	32.50	946SHA	65.00
250	21.75	759	18.00	826	32.50	967	101.00
256	20.00	760	18.00	832	21.75	970	65.00
272	18.00	761	21.75	833	21.75	973	29.00
292	32.50	766	18.00	834	21.75	974	25.25
293	21.75						

Schrade Walden Horticultural Knives

170	\$ 11.00	195	\$ 16.25
173	7.25	180	23.50
174	7.25	181	23.50
175	14.50	182	20.00
176	14.50	183	20.00
186	18.00	196	16.25
190	25.25	716	21.75
194	16.25	730	21.75

Schrade Walden Sampling Knives

SS102	\$ 23.50
105	27.00
SS105	29.00
SS700	29.00

Schrade Walden Steak Knife Sets

125	11.00 set
126	36.00 set
127	11.00 set

Cost for deep hot stamping handle in one color in interchangeable block type:

		<u>Stamped one side</u>	<u>Stamped two sides</u>
Minimum	1 dozen to 6 dozen	\$3.00 per doz. extra	\$6.00 per dozen extra
	6 " to 12 "	2.00 " " "	4.00 " " "
	12 " to 25 "	1.50 " " "	3.00 " " "
	25 " to 100 "	.96 " " "	1.44 " " "
	100 " to 200 "	.48 " " "	.72 " " "
	200 dozen or more	.36 " " "	.54 " " "

Additional Engraving Charge: Individual Name, one line - 50¢ per knife

TERMS: 1% 10 days FOB WALDEN, N.Y.