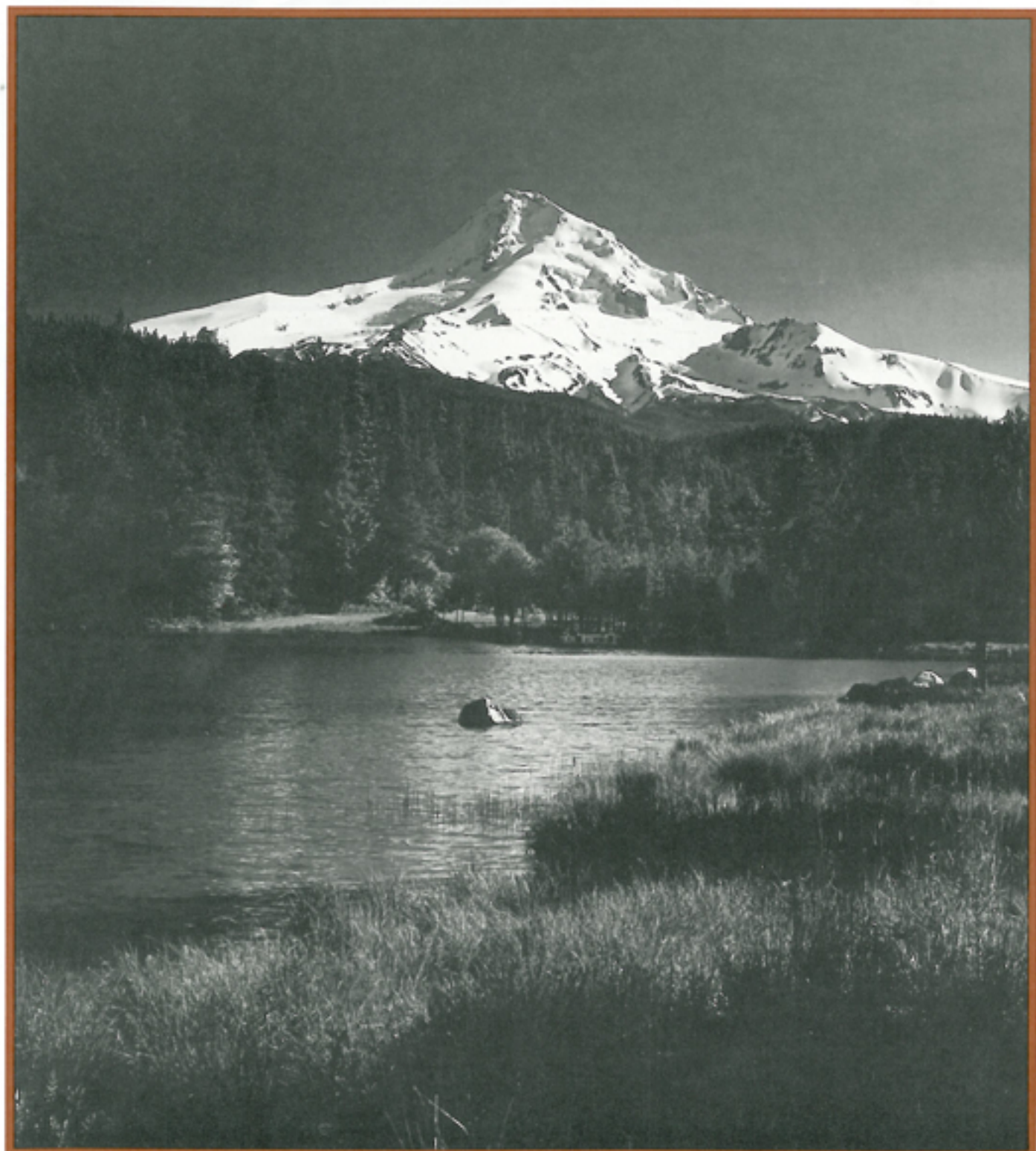




COLUMBIA
RIVER KNIFE
& TOOL



K.I.S.S.™

Keep It Super Simple



K.I.S.S. - It's one honey of a knife! "Keep It Super Simple" said Ed Halligan, Knifemakers' Guild Member, and designer/engineer of CRKT's new K.I.S.S. knife. And it is! The compact, palm-size folder has two major components - Blade and Frame - that are precision fine blanked for superior fit and smooth operation.

The ingenuity of the K.I.S.S. Frame Lock™ design is that the secure, safe and strong blade lock serves not only as part of the frame but also as the handle itself. A thumb stud is used to one-hand open the blade, and as the blade is fully rotated open the Frame Lock snaps crisply in behind the blade to guarantee a sound lock-up. And the blade can be closed by one-hand by simply releasing the Frame Lock.

The blade shape is tanto-inspired—Chisel-Point on the front and flat on the backside—so that when the blade is closed onto its handle/frame, the precision fit effectively "seals" the cutting edge to the frame, even though it's exposed. An accessible hex-head fastener allows easy, precise adjustment of opening/closing tension. Both blade and frame are high carbon stainless steel and are fine bead-blast finished as is the pocket/money clip and other hardware.

The design of the K.I.S.S. pocket/money clip permits it to be used in a variety of ways: clipped to the pocket; as a money clip knife; and with split-ring or lanyard, as a key chain knife.

5500 K.I.S.S.

Blade: Tanto, Chisel-Point Ground
Blade Length: 2 1/4" (5.7 cm)
Overall Length: 3 1/2" (8.9 cm)

5510 K.I.S.S.

Blade: Tanto, Chisel-Point Ground
Combined Razor-Sharp and Triple-Point™ Serrated
Blade Length: 2 1/4" (5.7 cm)
Overall Length: 3 1/2" (8.9 cm)



The K.I.S.S. features the Frame Lock, a secure, safe and strong blade lock.



S-2



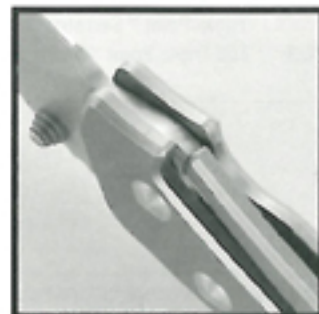
S-2 is a sleek, simple, powerful tool. It incorporates the Frame Lock™ design that serves as one of the most secure, safe and strongest blade locks known. What's more, the Frame Lock also serves as part of the precision machined Titanium 6AL4V handle.

One-hand opening is smooth and fast assisted by Teflon® bearings. As the blade is fully rotated open, the Frame Lock snaps soundly in place behind the blade to guarantee a powerful lock-up. Further, as the knife is gripped, additional pressure is applied to the lock arm thus increasing the safety of the Frame Lock. The hollow-ground ATS 34 stainless steel blade has outstanding edge retention and durability. Fine blanked and CNC machined for accuracy, the blade also features a ramped spine with broad friction grooves for safety and better blade control.

Other features include a bead-blast finished grooved handle that "grips you back" and a removable Titanium pocket/clothing clip. Stylish, durable, and robust, the S-2 is a perfectly balanced, powerful work tool built to stay at your side for many years.

S-2 Specifications

Blade: Overall Length - 3.63" (9.2 cm)	7503: Razor-Sharp Cutting Edge
Cutting Edge - 3.38" (8.6 cm)	7513: Combined Razor-Sharp and Triple-Point™ Serrated
Thickness - 0.12" (.30 cm)	7523: Full Triple-Point™ Serrated
Hardness - 57 - 58 HRC	
Handle: Closed Length - 4.94" (12.5 cm)	
Weight: 4.7 oz (134g)	



The unique geometry of the Frame Lock transfers the load straight through the arced lock arm into the mid-frame and keeps the contact line of the blade and lock together even under the most extreme, high loads.



Apache



The Apache group of locking liner folding knives meets and exceeds the demanding standards for multi-function cutting tools. Held under close scrutiny the combination of materials, advanced-technology manufacturing and purpose-driven design, produces knives that more than fulfill the needs of the owner.

Each ATS 34 stainless steel blade is blanked, ground and machined for a precision fit to the T420 Stainless Steel Locking Liner and bead-blast finished to be non-reflective. The Blades pivot against Teflon® bearings and can be opened and closed smoothly and quickly with one hand. The thumb stud is mounted for right hand opening but can be removed and reversed for left hand opening.

The Apache blade design integrates a double guard with friction grooved surfaces to measurably increase safety and control regardless of how the knife is held. Plus, the locking liner is accessible only at the bottom of the frame to minimize accidental release under extreme conditions.

The Apaches are comfortable to grip. The grooved handle accommodates every size hand and its shape permits the knives to be held and used in a variety of positions. The lightweight, precision machined 6061 T6 hard anodized black aluminum handles have a bead blast finish that improves grip.

All models are equipped with a SK7 black belt/pocket clip for ease of use and the clip adds leverage in one hand opening.

Apache Specifications

Blade: Overall Length - 4.06" (10.3 cm)
Cutting Edge - 3 .78" (9.6 cm)
Thickness - 0.12" (0.3 cm)
Hardness - 57 - 58 HRC
Handle: Closed Length - 5.12" (13.0 cm)
Weight: 4.8 oz (137 g)

7003: Razor-Sharp Cutting Edge
7013: Combined Razor-Sharp and Triple-Point™ Serrated
7023: Full Triple-Point™ Serrated

Apache II Specifications

Blade: Overall Length - 3.18" (8.1 cm)
Cutting Edge - 2.87" (7.3 cm)
Thickness - 0.09" (0.2 cm)
Hardness - 57 - 58 HRC
Handle: Closed Length - 4.12" (10.5 cm)
Weight: 2.9 oz (82 g)

7002: Razor-Sharp Cutting Edge
7012: Combined Razor-Sharp and Triple-Point™ Serrated
7022: Full Triple-Point™ Serrated

Seahawk

The Seahawk's powerful hawksbill blade is designed to be a workhorse. The radius of the cutting edge "feeds" the material to be cut into the blade so that it doesn't slip away. It's ideal for marine and industrial applications where performance counts.

The Seahawk shares the same combination of materials and advanced manufacturing techniques as the Apache.

Seahawk Specifications

Blade: Overall Length - 3.87" (9.8 cm)
Cutting Edge - 3 .37" (8.6 cm)
Thickness - 0.12" (0.3 cm)
Hardness - 57 - 58 HRC
Handle: Closed Length - 5.12" (13.0 cm)
Weight: 4.6 oz (131 g)
7073: Full Triple-Point™ Serrated





COMMANDER



The knife that's as rugged as it sounds. If you demand hard work from a folding knife, the Commander is a great choice. Its skeleton, zinc alloy frame eliminates weight without compromising strength, and the frame's extended guard, generous size and bead-blast finish give you extra gripping power. High-carbon, chromium stainless steel blades stand up to challenging day-to-day tasks, with Triple-Point™ serrations on hand to tackle tougher jobs. The grooved thumb stud and locking liner design allow you to comfortably open or close the blade with a single, smooth, one-handed motion. Hex-head fasteners let you tighten the blade, providing the proper blade tension even under heavy, sustained workloads. The Commander is a highly functional, multi-purpose folding knife, and its convenient pocket/belt clip keeps it always "at the ready."

6601 Ace

Blade: Taper-Ground Drop-Point
Blade Length: 2 1/2" (6.4 cm)
Overall Length: 5 3/4" (14.6 cm)

6602 Red Dog

Blade: Taper-Ground Drop Point
Blade Length: 2 7/8" (7.3 cm)
Overall Length: 7" (20.1 cm)

6603 Blitz

Blade: Taper-Ground Drop Point
Blade Length: 3 1/2" (10.1 cm)
Overall Length: 8 3/4" (25.2 cm)

6611 Patton

Blade: Taper-Ground Drop-Point
Combined Razor-Sharp and
Triple-Point™ Serrated
Blade Length: 2 1/2" (6.4 cm)
Overall Length: 5 3/4" (14.6 cm)

6612 Doolittle

Blade: Taper-Ground Drop-Point
Combined Razor-Sharp and
Triple-Point™ Serrated
Blade Length: 2 7/8" (7.3 cm)
Overall Length: 7" (20.1 cm)

6613 Mac

Blade: Taper-Ground Drop-Point
Combined Razor-Sharp and
Triple-Point™ Serrated
Blade Length: 3 1/2" (10.1 cm)
Overall Length: 8 3/4" (25.2 cm)

6623 Monty

Blade: Taper-Ground Drop-Point
Full Triple-Point™ Serrated
Blade Length: 3 1/2" (10.1 cm)
Overall Length: 8 3/4" (25.2 cm)



BIG EDDY FILLETS



When you pick up a Big Eddy fillet knife, you'll immediately feel its balance and comfort. The unique Twin-Fused™ handle is a rigid, high-impact polypropylene core wrapped with a soft, comfortable checkered grip for a firm, safe hold. On the business end, Big Eddy features a Razor-Sharp blade with perfectly placed mid-point flex and Triple-Point™ Serrations to help you handle the toughest cutting chores. Its streamlined sheath is injection molded for tough wear and style, and the polypropylene lanyard adds extra convenience. Big Eddy builds in all the quality of the world's finest filleting knives at a remarkably fair price.

3008 Big Eddy

Razor-Sharp Filleting Knife with Triple-Point™ Serrations

Blade: Taper Ground

Blade Length: 6 3/4" (17.1 cm)

Overall Length: 12" (30.5 cm)

3010 Big Eddy II

Razor-Sharp Filleting Knife with Triple-Point™ Serrations

Blade: Taper Ground

Blade Length: 9" (22.9 cm)

Overall Length: 14 1/2" (36.8 cm)

3008C Big Eddy

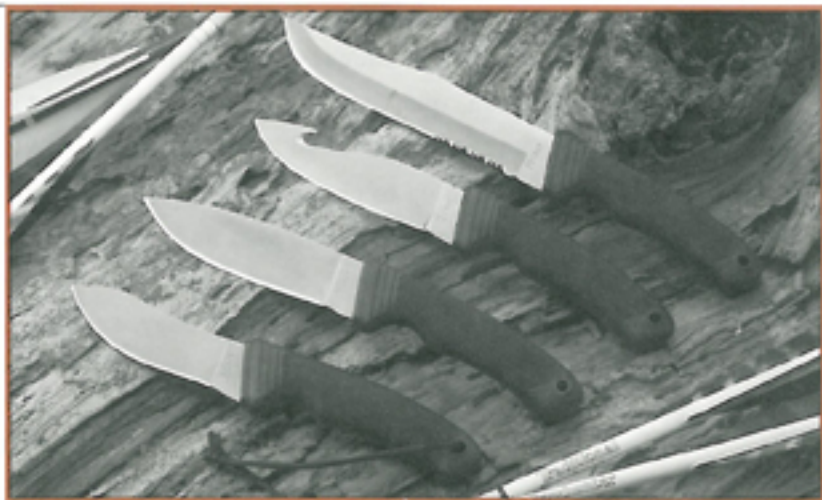
Same as 3008 in Clam Pack

3010C Big Eddy II

Same as 3010 in Clam Pack

BIG SKY HUNTERS

Sharp and Strong, these rugged knives are designed for field and camp chores. They have heavy-gauge 3.5 mm blades for toughness when skinning and field dressing game. Friction grooves on the blade spines increase safety. Big Sky Hunters have a checkered grip and ribbed guard to provide secure, non-slip gripping when cleaning your quarry. Razor-Sharp cutting edges mean clean smooth cuts while Triple-Point™ Serrated edges handle the rugged cutting chores that could damage fine cutting edges.



Sheaths sewn from extra-sturdy 9-ounce shoulder leather are crafted for durability. The handle cover has no straps or snaps to catch on brush causing you to lose your knife. They are polyethylene lined to help prevent accidental cut through, plus a weep hole allows both sheath and knife to dry quickly.

2000 Sawtooth

Blade: Hollow-Ground, Bowie/Hunting Combined Razor-Sharp and Triple-Point™ Serrated

Blade Length: 6 1/2" (16.5 cm)

Overall Length: 11 3/4" (29.8 cm)

2001 Wind River

Blade: Taper-Ground, Drop-Point Skinning with Gut Hook

Blade Length: 4 3/4" (12.1 cm)

Overall Length: 9 3/4" (24.8 cm)

2002 Bridger

Blade: Taper-Ground Skinning

Blade Length: 3 3/4" (9.5 cm)

Overall Length: 9" (22.9 cm)

2003 Partner

Blade: Taper-Ground, Drop-Point Skinning

Blade Length: 4 3/4" (12.1 cm)

Overall Length: 9 3/4" (24.8 cm)



COBRA GOLD® KOMODO GOLD



6203 Cobra Gold

Blade: Double-Hollow
Ground, Clip-Point
Blade Length: 3 7/8" (9.8 cm)
Overall Length: 9" (22.9 cm)

6213 Delta

Blade: Double-Hollow Ground,
Clip-Point, Combined
Razor-Sharp and Triple-
Point™ Serrated
Blade Length: 3 7/8" (9.8 cm)
Overall Length: 9" (22.9 cm)

6223 Alpha

Blade: Double-Hollow Ground,
Clip-Point, Full Triple-
Point™ Serrated
Blade Length: 3 7/8" (9.8 cm)
Overall Length: 9" (22.9 cm)

Created by custom knife maker Jim Hammond, the Cobra Gold and Komodo Gold knives are beautifully crafted, thoughtfully designed tools. These Locking Liner Folders offer smooth one-hand opening, assisted by Teflon® bearings, that can be accomplished by both right and left handers and the handle's clearance arc is designed to give easy, yet safe, access to the locking liner for one-hand closing. And the stainless steel locking liner creates a positive lock by making maximum contact with the back of the blade.

The Cobra Gold and Komodo Gold's handle is formed from an injection-molded Zytel® frame that's durable and strong enough to stand up to the big jobs. It incorporates a double guard for greater safety and control. Contoured and sculptured, this handle gives you relaxed control during long periods of use and permits the knives to be held more secure during heavy work. Soft Kraton® scales mean a non-slip grip in any kind of weather, with raised ribs adding an additional measure of safety. Hex-head fasteners at the blade pivot and stop allow tightening the blade, providing the proper blade tension even under sustained workloads.



6253 Komodo Gold

Blade: Chisel Point Ground,
Tanto
Blade Length: 3 7/8" (9.8 cm)
Overall Length: 9" (22.9 cm)

6263 Echo

Blade: Chisel Point Ground,
Tanto, Combined Razor-
Sharp and Triple-Point™
Serrated
Blade Length: 3 7/8" (9.8 cm)
Overall Length: 9" (22.9 cm)

6273 Echo Hawk

Blade: Chisel Point Ground,
Tanto, Triple-Point™
Serrated
Blade Length: 3 7/8" (9.8 cm)
Overall Length: 9" (22.9 cm)

The Cobra Gold's bead-blast finished blade is double-hollow ground to maximize cutting efficiency—with as much mass as possible left at the blade tip to increase durability. The blade area ahead of the integral top guard is unground to maximize blade strength in an area susceptible to heavy cross-stressing. And three different cutting edges fit every work and sporting requirement.

The Komodo Gold's powerful blade is a Tanto inspired, Chisel Point-Ground blade that is bead-blast non-reflective finished. It too has been designed to maximize cutting efficiency, blade strength and durability, and offers three different cutting edges.

All Cobra Gold and Komodo Gold models include webbed belting scabbards that can be worn vertically or horizontally on the belt.



2200L with Leather Sheath with Boot/Belt Clip



2207L with Leather Belt Sheath

Komodo builds upon the strengths of the SEALTAC®, the tough dual-function fixed-blade knife designed by custom knife maker Jim Hammond. The Komodo features an impressive Tanto-inspired, Chisel-Point Ground blade. The High-Carbon Chromium Stainless Steel blade has a bead-blast non-reflective finish and is ground only on the front side, creating a perfectly balanced blade with increased mass for maximum strength. Ahead of the integral guards, the blade is not ground to maximize blade strength in the cutting area most subject to cross-stress. The Razor-Sharp cutting edge provides maximum cutting efficiency. Plus, full tang construction gives the Komodo design superior strength and balance—improving performance and reducing fatigue.

The Komodo's super strength injection-molded Grilon® handle is sculpted with swells at both hand and pommel for maximum control. It provides a non-slip grip regardless of use and allows the knife to be held more securely during high-stress heavy load situations.

The Komodo models are shown above with tough 9 oz. Shoulder Leather Sheaths, a superior grade selected for its durability. All models are also available with Kydex® sheaths; a thermo-plastic that provides exceptional impact and tensile strength, rigidity, and abrasion resistance. Optional shoulder harness and belt carry extender are available for Kydex Belt Sheath Models.

2200K Komodo 4

Blade Length: 4 1/4" (10.8 cm)
Overall Length: 8 1/8" (20.6 cm)
Includes: Kydex Sheath with 360° Rotating Clip

2200L Komodo 4

Blade Length: 4 1/4" (10.8 cm)
Overall Length: 8 1/8" (20.6 cm)
Includes: Leather Sheath with Boot/Belt Clip

2206K Komodo 6

Blade Length: 5 1/2" (14.0 cm)
Overall Length: 10 1/2" (26.7 cm)
Includes: Kydex Belt Sheath

2206L Komodo 6

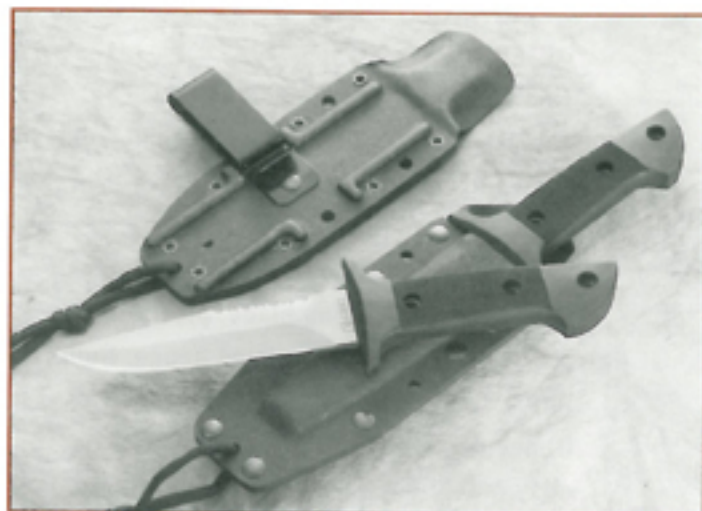
Blade Length: 5 1/2" (14.0 cm)
Overall Length: 10 1/2" (26.7 cm)
Includes: Leather Sheath with Boot/Belt Clip

2207K Komodo 7

Blade Length: 6 1/2" (16.5 cm)
Overall Length: 12 3/8" (31.4 cm)
Includes: Kydex Belt Sheath

2207L Komodo 7

Blade Length: 6 1/2" (16.5 cm)
Overall Length: 12 3/8" (31.4 cm)
Includes: Leather Belt Sheath

**2100K with Kydex® Sheath with 360° Rotating Clip****2107K SEALTAC II with Kydex Belt Sheath**

Designed by custom knife maker Jim Hammond, the SEALTAC is a tough, dual-function knife. Its double-taper ground, bead-blast finished blade incorporates a Razor-Sharp cutting edge with a Triple-Point™ Serrated spine: the sharp edge is for routine cutting tasks; the serrated edge rips through tough materials like hemp rope in a flash. The double-taper grind leaves as much metal at the blade point as possible for maximum strength. Perfectly balanced, the SEALTAC blade provides maximum cutting efficiency with the knife point slightly raised for superb tracking. The blade area ahead of the integral guards is left unground—maximizing blade strength in the area subject to the most cross-stress. Full tang construction gives SEALTAC superior strength and balance—improving performance and reducing fatigue.

SEALTAC's injection molded Grilon® handle is sculptured with swells at both the hand and pommel for maximum control. You get a non-slip grip regardless of conditions. The grip's overall thickness gives more relaxed control during periods of long use and allows the knife to be held more securely during high stress heavy-load situations.

The SEALTAC models are shown above with Kydex sheaths. Kydex is a thermo-plastic that provides the superior impact strength, rigidity, tensile strength, and abrasion resistance for tough use in the field. Optional shoulder harness and belt carry extender are available for Belt Sheath models. Plus all SEALTAC models are available with tough, durable 9 oz. shoulder leather sheaths.

2100K Vector

Blade Length: 4 1/4" (10.8 cm)
Overall Length: 8 1/8" (20.6 cm)
Includes: Kydex Sheath with
360° Rotating Clip

2100L Vector

Blade Length: 4 1/4" (10.8 cm)
Overall Length: 8 1/8" (20.6 cm)
Includes: Leather Sheath with
Boot/Belt Clip

2106K SEALTAC

Blade Length: 5 1/2" (14.0 cm)
Overall Length: 10 1/2" (26.7 cm)
Includes: Kydex Belt Sheath

2106L SEALTAC

Blade Length: 5 1/2" (14.0 cm)
Overall Length: 10 1/2" (26.7 cm)
Includes: Leather Sheath with
Boot/Belt Clip

2107K SEALTAC II

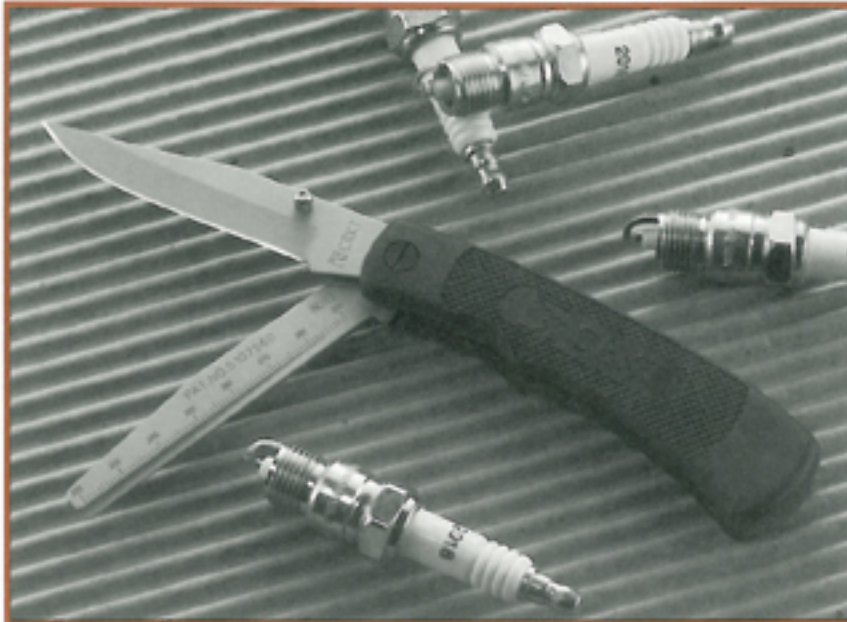
Blade Length: 6 1/2" (16.5 cm)
Overall Length: 12 3/8" (31.4 cm)
Includes: Kydex Belt Sheath

2107L SEALTAC II

Blade Length: 6 1/2" (16.5 cm)
Overall Length: 12 3/8" (31.4 cm)
Includes: Leather Belt Sheath



FOLDING HAND TOOLS



Cut 'n Gap™

This unique tool was invented and patented by a professional mechanic who knows exactly how pro's tools have to work. Designed to take the hard use a mechanic can dish out, the Cut 'n Gap has a rugged main cutting blade, plus a precision spark plug gapping gauge. Built into a single frame, both of these frequently used tools are always within easy reach. To make work easier, the cutting blade can be opened with one hand. Like the Cattleman (shown below), a soft Kraton® case covers the internal brass frame. It's perfectly sized to fit your pocket.

6300 Cut 'n Gap

Blades: 3" (7.6 cm) Hollow-Ground, Clip Point
3" (7.6 cm) Precision Gapping Tool
Overall Length: 7 1/8" (18.1 cm)

Cattleman

The right tool for farmers, ranchers, construction workers—or anyone who uses a knife for rugged, two-handed work. This two-bladed tool combines a Razor-Sharp cutting blade for precise work with a Triple-Point™ Serrated blade for jobs that damage most cutting edges. For fast access, the Razor-Sharp blade can be opened with one hand. Like the Cut'n Gap (shown above), the Cattleman's handle features a soft, non-slip checkered grip. It's contoured to fit your hand for relaxed control during heavy jobs.



6320 Cattleman

Blades: 3" (7.6 cm) Hollow-Ground, Clip Point
with Razor-Sharp Cutting Edge
3" (7.6 cm) Taper-Ground Sheepfoot
with with Triple-Point™ Serrations
Overall Length: 7 1/8" (18.1 cm)



WRANGLER LOCK BACKS



An ultra-light, fiberglass-reinforced-nylon frame builds tremendous strength into this slim profile lock back. Designed to fit in your pocket, the Wrangler's taper-ground, drop-point blade opens and closes with a minimum of effort. This beefy blade is so durable it greatly reduces chipped edges and broken tips. A heavily checkered handle gives you a comfortable and steady grip that makes your work easier. The Wrangler is a precision-built lock back at a surprisingly fair price.

6400 Angus

Blade: Taper-Ground,
Drop-Point

Blade Length: 2 1/4" (5.7 cm)
Overall Length: 5 3/8" (13.7 cm)

6401 Colt

Blade: Taper-Ground,
Drop-Point

Blade Length: 2 3/4" (7.0 cm)
Overall Length: 6 1/4" (15.9 cm)

6402 Mustang

Blade: Taper-Ground,
Drop-Point

Blade Length: 3 1/4" (8.3 cm)
Overall Length: 7 1/2" (19.1 cm)
Includes: Webbed Belting
Scabbard

6411 Badger

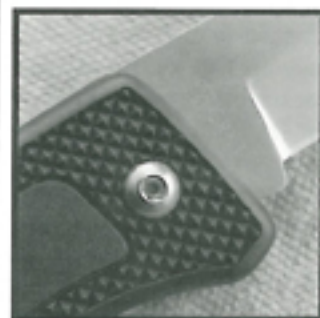
Blade: Taper-Ground, Drop-Point
Combined Razor-Sharp and
Triple-Point™ Serrated

Blade Length: 2 3/4" (7.0 cm)
Overall Length: 6 1/4" (15.9 cm)

6412 Coyote

Blade: Taper-Ground, Drop-Point
Combined Razor-Sharp and
Triple-Point™ Serrated

Blade Length: 3 1/4" (8.3 cm)
Overall Length: 7 1/2" (19.1 cm)
Includes: Webbed Belting
Scabbard



Over time, all blades can loosen. CRKT builds Wrangler Lock Backs with a special hex head fastening system so you can tighten its blade for proper tension throughout the knife's long life.



POCKET BILLBOARDS



Wrangler and Commander models are a perfect and highly effective way to keep your company name, logo or product in front of your customers. CRKT folders are your advertising billboard to present a strong image for your company. A variety of durable colors are available for the high quality, detailed printing of your unique identity. Plus, CRKT Pocket Billboards are remarkably affordable. Please call or fax for the few details needed to get your customized sales promotion started.

Knives are serious tools, that's why they're part of our name.

CRKT builds serious knives, engineered to perform on the job or in the field, year in and year out, without letting you down. All our hard-working knives are designed to be safer, more comfortable, and less fatiguing in use. They are practical, purpose driven designs created by some of the most innovative Knifemakers' Guild Members and our creative designers.

We build good products because materials are the best available and are matched to the performance requirements of each model. All blade steels are high-carbon chromium stainless – AUS6M, AUS8A, ATS34 – heat treated to 55 - 58 HRC. The blade hardness is varied by product group to best meet the typical application of models within the group. Handle and frame materials are some of the most technologically advanced and they too are varied by product group to produce the best combination of materials for the performance required.

We're able to control all manufacturing processes, beginning to end, which permits us to build knives without compromising quality in any part of their creation. Further, our accessories are crafted to the same high standards as our knives, so that each sheath and scabbard lives up to our high expectation, and yours.

We believe our knives are equal in quality to the best production knives in the market and we work hard to make sure our prices are fair. We hope this catalog will provide all the information you need about our current product offerings. But if it doesn't, please call us. We would enjoy speaking with you and answering any questions in detail.

Sincerely,

Paul Gillespie & Rod Bremer

Warranty

If any of our knives ever breaks or fails because of material or manufacturing defect, we'll replace it. This is a limited lifetime warranty, good as long as you own your knife.

Having said that, we'd also like to point out that knives this good rarely break or fail from defect. Usually, they break or fail from what we call "tool abuse": using them for unsuitable tasks like prying or pounding. So please match the tool to the task, and use your knife only for cutting. The knife will last longer, and you'll be safer too.

If you ever are inclined to use your knife for something other than cutting, just remember the words of one of our old friends, "A knife is the least effective and most expensive pry bar you'll ever own."



COLUMBIA
RIVER KNIFE
& TOOL

9720 S.W. Hillman Court, Suite 805
Wilsonville, OR 97070 USA
Tel: 503/685-5015 800/891-3100
Fax: 503/682-9680