



COLUMBIA  
RIVER KNIFE  
& TOOL



PRODUCT CATALOG



## Knives are serious tools, that's why they're part of our name.

CRKT builds serious knives, engineered to perform on the job or in the field, year in and year out, without letting you down. All our hard-working knives and shears are designed to be safer, more comfortable, and less fatiguing in use.

How do we build such good products? We start with practical, performance-oriented designs created by some of the country's most innovative designers. Materials are absolutely the best available, from world-class blade steel—a high-carbon chromium stainless—to some of the most technologically advanced new synthetic handle materials. Because all CRKT knives are built in our own factory, we control manufacturing quality from beginning to end. We build knives the way fine knives should be built—without compromising quality in any part of their creation. CRKT accessories are crafted to the same high standards as our knives, so that each sheath and scabbard lives up to our high expectation, and yours.

CRKT knives are equal in quality to the finest knives in the world—and we work hard to make sure our prices are fair.

We hope this catalog will provide all the information you need about our current product offerings. But if it doesn't, please call us. We would enjoy speaking with you and answering any questions in detail.

Sincerely,

Paul Gillespie & Rod Bremer

### Warranty

*If any of our knives ever breaks or fails because of material or manufacturing defect, we'll replace it. This is a lifetime warranty, good as long as you own your knife.*

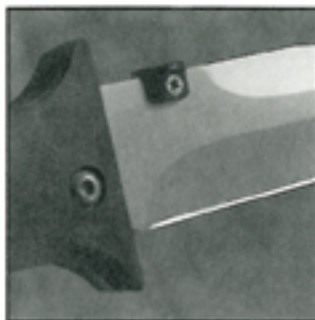
Having said that, we'd also like to point out that knives this good rarely break or fail from defect. Usually, they break or fail from what we call "tool abuse": using them for unsuitable tasks like prying or pounding. So please match the tool to the task, and use your knife only for cutting. The knife will last longer, and you'll be safer too.

If you ever are inclined to use your knife for something other than cutting, just remember the words of one of our old friends, "A knife is the least effective and most expensive pry bar you'll ever own."

## Columbia River Knife & Tool builds in exceptional value at every step of the manufacturing process.

### Precision "Fine Blanking" Manufacturing Technology

We use the world's most advanced (and expensive) manufacturing technology to build the industry's most affordable fine knives. Precision blanking means that all parts fit precisely, without hand grinding adjustments that weaken knife components.

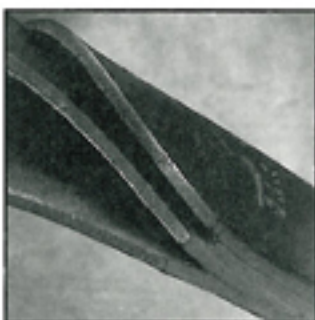
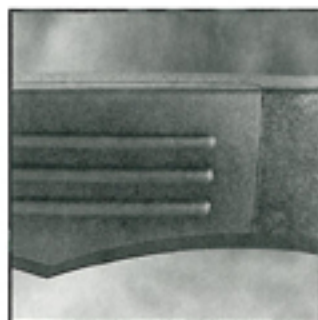


### Consistently High Blade Quality

Incredibly accurate computer-controlled grinders produce exacting blade designs such as this complex radius grind. The result: consistently powerful blades with Razor-Sharp edges you can sharpen in the field or at home.

### Custom Designs & Innovative Materials

CRKT works with custom knife designers to incorporate the newest materials and the most innovative designs. Each of our knives has its own unique style.

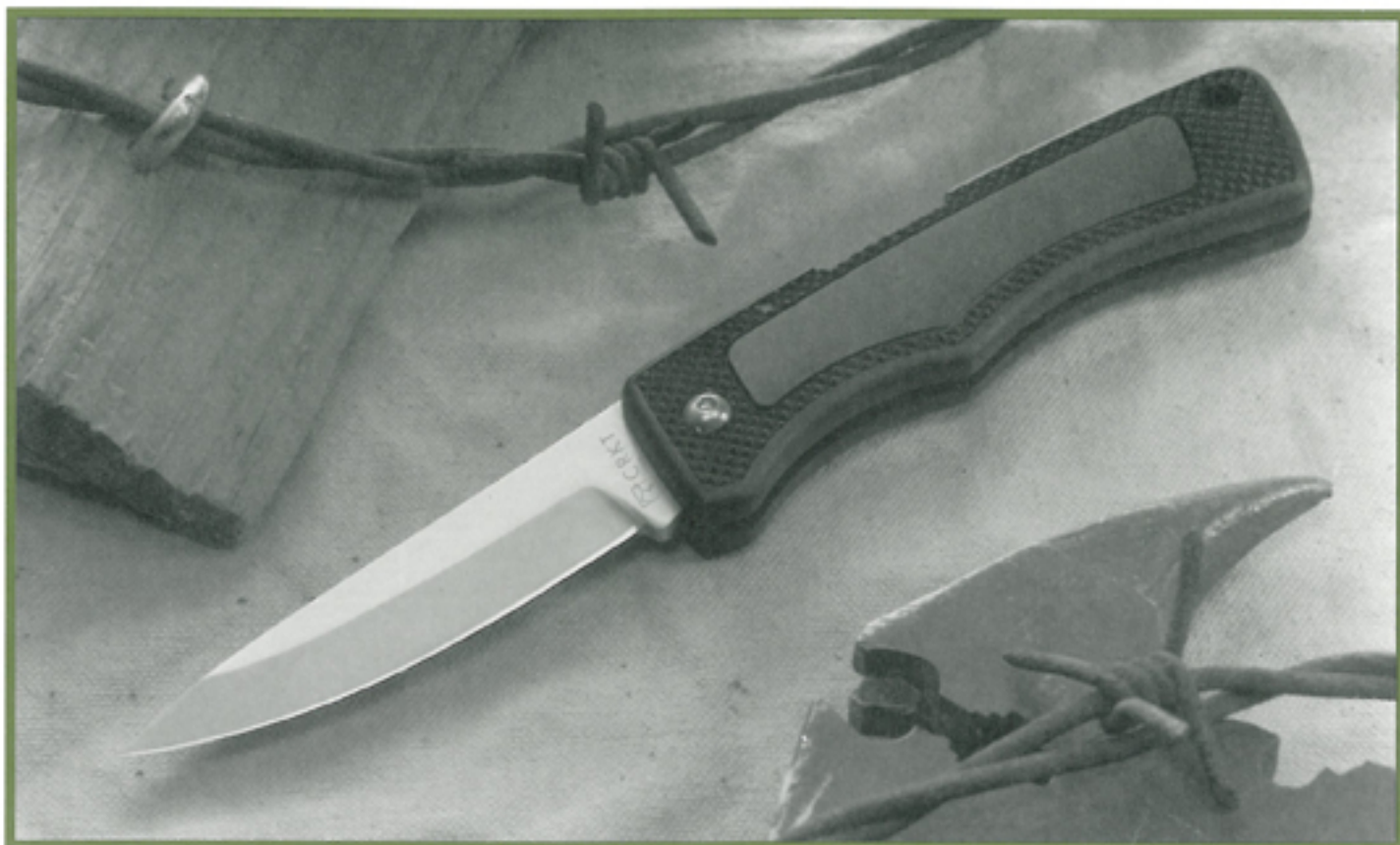


### World-Class Accessories

Designed for comfort, durability, convenience and style, our sheaths and scabbards feature the same quality and durability as our knives.



## WRANGLER LOCK BACKS



An ultra-light, fiberglass-reinforced-nylon frame builds tremendous strength into this slim profile lock back. Designed to fit in your pocket, the Wrangler's hollow-ground, drop-point blade opens and closes with a minimum of effort—and Teflon® washers will keep its action smooth for the life of the knife. This beefy blade is so durable it greatly reduces chipped edges and broken tips. A heavily checkered handle gives you a comfortable and steady grip that makes your work easier. The Wrangler is a precision-built lock back at a surprisingly fair price.

### 6400 Angus

Blade: Hollow-Ground,  
Drop-Point  
Blade Length: 2 1/4" (5.7 cm)  
Overall Length: 5 3/8" (13.7 cm)

### 6401 Colt

Blade: Hollow-Ground,  
Drop-Point  
Blade Length: 2 3/4" (7.0 cm)  
Overall Length: 6 1/4" (15.9 cm)

### 6402 Mustang

Blade: Hollow-Ground,  
Drop-Point  
Blade Length: 3 1/4" (8.3 cm)  
Overall Length: 7 1/2" (19.1 cm)  
Includes: Webbed Belting  
Scabbard

### 6411 Badger

Blade: Hollow-Ground,  
Drop-Point with Triple-  
Point™ Serrations  
Blade Length: 2 3/4" (7.0 cm)  
Overall Length: 6 1/4" (15.9 cm)

### 6412 Coyote

Blade: Hollow-Ground,  
Drop-Point with Triple-  
Point™ Serrations - 50%  
Blade Length: 3 1/4" (8.3 cm)  
Overall Length: 7 1/2" (19.1 cm)  
Includes: Webbed Belting  
Scabbard



Over time, all blades can loosen. CRKT builds Wrangler Lock Backs with a special hex head fastening system so you can tighten its blade for proper tension throughout the knife's long life.

# POWERWORK SHEARS



Smooth-radius bone notch cuts without tearing.

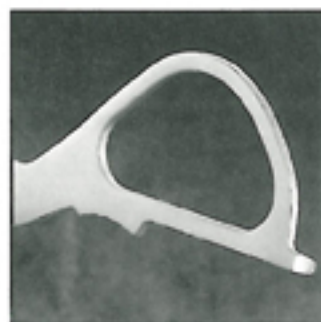
Micro-serrations help you cut and control hard-to-handle materials.

Large finger loops let you wear gloves while you work.

These shears have amazing cutting power—enough to handle the tough bull hides we use to make our leather sheaths and scabbards. A full stainless steel shank gives them their strength and durability. Bevel-ground blades and Razor-Sharp cutting edges make cutting faster and smoother, while unique Triple-Point™ Serrations grip hard-to-hold, slippery materials with ease. PowerWork Shears have a bright satin polished finish that resists staining, along with finger loops covered with textured, molded-on Kraton®. Cushioned and designed to reduce fatigue, these non-slip grips give you unmatched comfort and safety.

**5000 Professional Companion®**  
Multi-Task Shear  
Blade Length: 4" (10.2 cm)  
Overall Length: 9 1/2" (24.1 cm)

**5001 Bird Hunter**  
Game Shear with Bone Notch  
Blade Length: 4" (10.2 cm)  
Overall Length: 9 1/2" (24.1 cm)  
Includes: Oxblood Leather Sheath



The PowerWork Shear's full stainless steel shank lets you apply an enormous amount of pressure to the blades—for cutting power that won't separate under stress.



# FOLDING HAND TOOLS



## Cut 'n Gap

This unique tool was invented and patented by a professional mechanic who knows exactly how pro's tools have to work. Designed to take the hard use a mechanic can dish out, the Cut 'n Gap has a rugged, Razor-Sharp or optional Triple-Point™ Serrated main cutting blade, plus a precision spark plug gapping gauge. Built into a single frame, both of these frequently used tools are always within easy reach. To make work easier, the cutting blade can be opened and closed with one hand. Like the Cattleman (shown below), a soft Kraton® case covers the internal brass frame. It's perfectly sized to fit your pocket.

### 6300 Cut 'n Gap

Blades: 3" (7.6 cm) Hollow-Ground, Clip Point  
3" (7.6 cm) Precision Gapping Tool  
Overall Length: 7 1/8" (18.1 cm)

### 6310 Cut 'n Gap II

Blades: 3" (7.6 cm) Hollow-Ground, Clip Point with Triple-Point™ Serrations  
3" (7.6 cm) Precision Gapping Tool  
Overall Length: 7 1/8" (18.1 cm)

## Cattleman

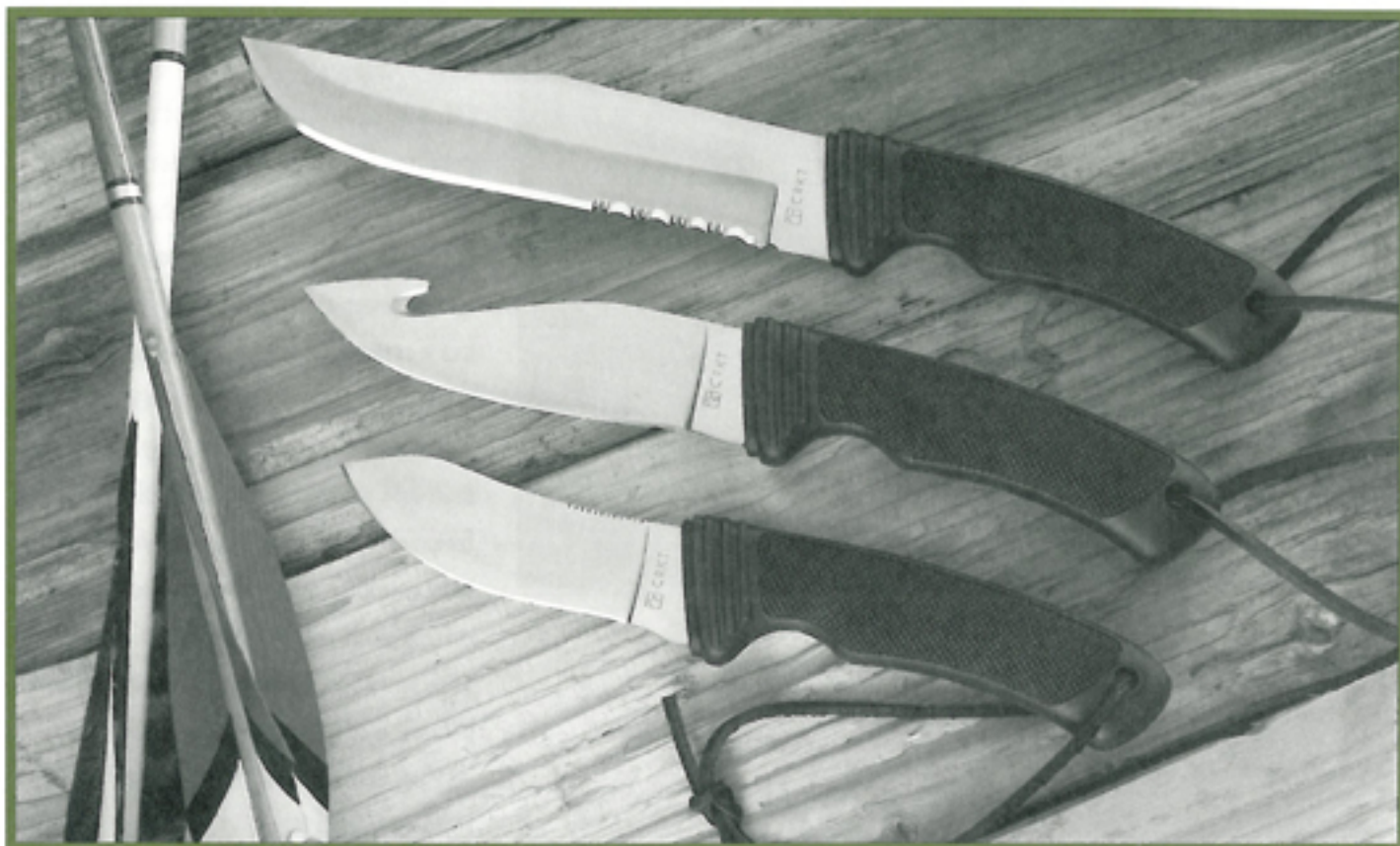
The right tool for farmers, ranchers, construction workers—or anyone who uses a knife for rugged, two-handed work. This two-bladed tool combines a Razor-Sharp cutting blade for precise work with a Triple-Point™ Serrated blade for jobs that damage most cutting edges. For fast access, the Razor-Sharp blade can be opened with one hand. Like the Cut 'n Gap (shown above), the Cattleman's handle features a soft, non-slip checkered grip. It's contoured to fit your hand for relaxed control during heavy jobs.



### 6320 Cattleman

Blades: 3" (7.6 cm) Hollow-Ground, Clip Point with Razor-Sharp Cutting Edge  
3" (7.6 cm) Taper-Ground Sheepsfoot with Triple-Point™ Serrations  
Overall Length: 7 1/8" (18.1 cm)

# BIG SKY HUNTERS



Sharp and strong, these rugged knives are designed for field and camp chores. They have heavy-gauge 3.5 mm blades for toughness when skinning and field dressing game. Friction grooves on the blade spines increase safety. Big Sky Hunters have a checkered grip and ribbed guard to provide secure, non-slip gripping when cleaning your quarry. Razor-Sharp cutting edges mean clean smooth cuts while Triple-Point™ Serrated edges handle the rugged cutting chores that could damage fine cutting edges.

Sheaths sewn from extra-sturdy 9-ounce shoulder leather are crafted for durability. The handle cover has no straps or snaps to catch on brush causing you to loose your knife. Weep hole allows both sheath and knife to dry quickly.

#### 2000 Sawtooth

Blade: Hollow-Ground,  
Bowie/Hunting  
Combined Razor-Sharp and  
Triple-Point™ Serrated  
Blade Length: 6 1/2" (16.5 cm)  
Overall Length: 11 3/4" (29.8 cm)

#### 2001 Wind River

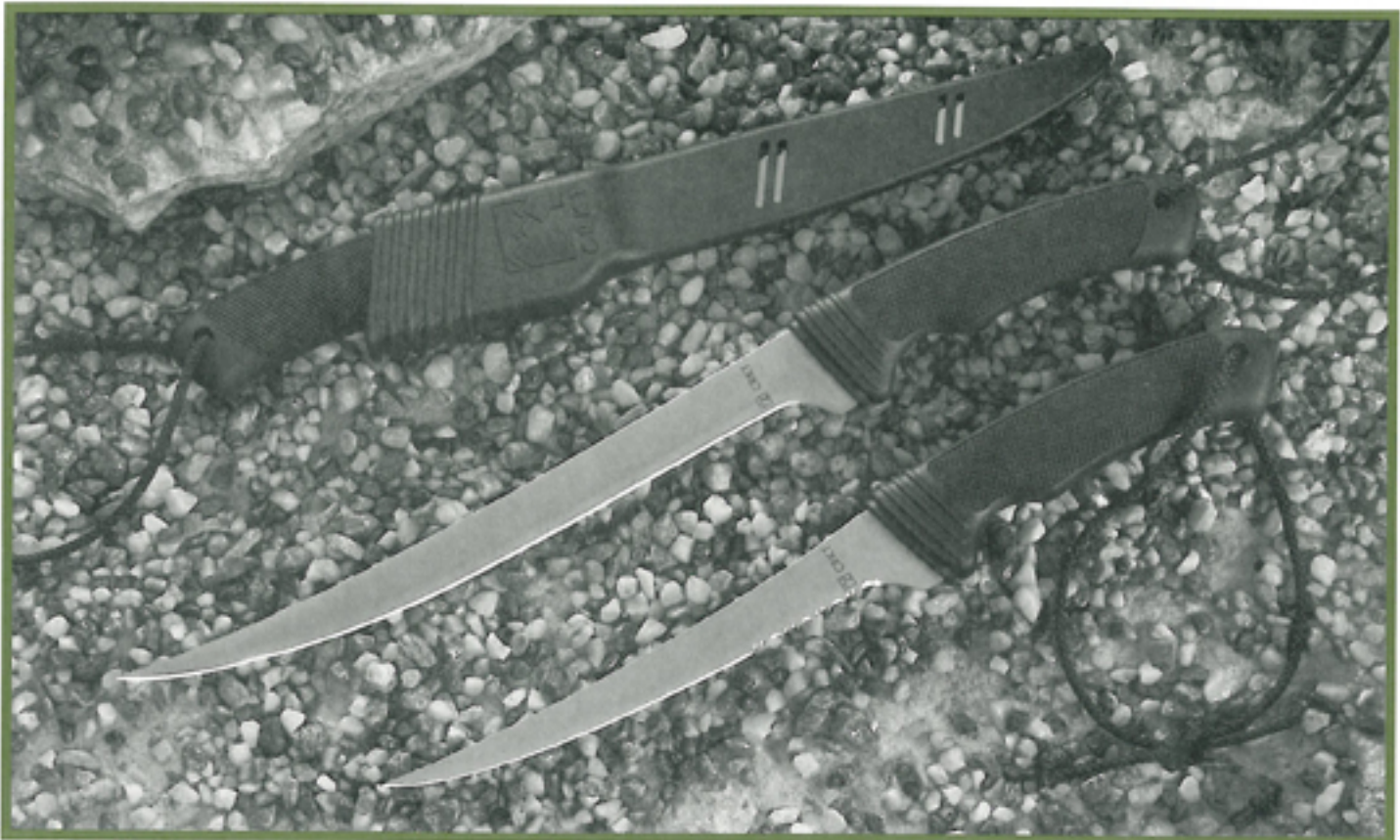
Blade: Taper-Ground, Drop-Point  
Skinning with Gut Hook  
Blade Length: 4 3/4" (12.1 cm)  
Overall Length: 9 3/4" (24.8 cm)

#### 2002 Bridger

Blade: Taper-Ground Skinning  
Blade Length: 3 3/4" (9.5 cm)  
Overall Length: 9" (22.9 cm)



Twin-Fused™ co-polymer construction begins with a rugged core of hard polypropylene to immobilize and control the blade. A second molding of soft Kraton® cushions and contours the handle to fit your hand. It's the most comfortable knife you'll ever hold.



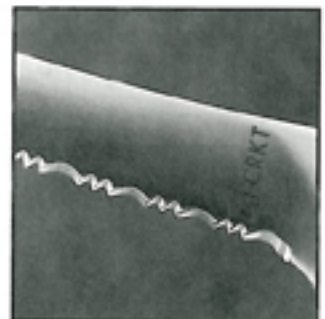
When you pick up a Big Eddy fillet knife, you'll immediately feel its balance and comfort. The unique Twin-Fused™ handle is a rigid, high-impact polypropylene core wrapped with a soft, comfortable checkered grip for a firm, safe hold. On the business end, Big Eddy features a Razor-Sharp blade with perfectly placed mid-point flex and optional Triple-Point™ Serrations to help you handle the toughest cutting chores. Its streamlined sheath is injection molded for tough wear and style, and the polypropylene lanyard adds extra convenience. Big Eddy builds in all the quality of the world's finest filleting knives at a remarkably fair price.

**3007 Big Eddy**  
Razor-Sharp Filleting Knife  
Blade: Taper Ground  
Blade Length: 6 3/4" (17.1 cm)  
Overall Length: 12" (30.5 cm)

**3008 Big Eddy**  
Filleting Knife with Triple-Point™  
Serrations  
Blade: Taper Ground with  
Triple-Point™ Serrations  
Blade Length: 6 3/4" (17.1 cm)  
Overall Length: 12" (30.5 cm)

**3009 Big Eddy II**  
Razor-Sharp Filleting Knife  
Blade: Taper Ground  
Blade Length: 9" (22.9 cm)  
Overall Length: 14 1/2" (36.8 cm)

**3010 Big Eddy II**  
Filleting Knife with Triple-Point™  
Serrations  
Blade: Taper Ground with  
Triple-Point™ Serrations  
Blade Length: 9" (22.9 cm)  
Overall Length: 14 1/2" (36.8 cm)



Big Eddy's Triple-Point™ Serrations cut cartilage, bones and fins that could damage the edge of an ordinary blade. Each curve of the serration is as sharp as the Razor-Sharp blade.



Created by custom knife maker Jim Hammond, the Cobra Gold is a beautifully crafted, thoughtfully designed tool. This comfortable work knife offers one-hand opening and closing with a cutting edge to fit every work and sporting requirement. Its blade is double-taper ground to maximize cutting efficiency—with as much mass as possible left at the blade tip to increase durability. The blade area ahead of the integral top guard is unground to maximize blade strength in an area susceptible to heavy cross-stressing. A bead-blast finish is the final touch to this premier blade.

The Cobra Gold's handle is formed from an injection-molded Zytel® frame that's durable and strong enough to stand up to the big jobs. It incorporates a double guard for greater safety and control. Contoured and sculptured, this handle gives you relaxed control during long periods of use and permits the knife to be held more securely during heavy work. Soft Kraton® scales mean a non-slip grip in any kind of weather, with raised ribs adding an additional measure of safety.

**6211 Bravo**

Blade: Double-Taper Ground,  
Clip-Point/Triple-Point™  
Serrations  
Blade Length: 3" (7.6 cm)  
Overall Length: 6 3/4" (17.1 cm)

**6212 Charlie**

Blade: Double-Taper Ground,  
Clip-Point/Triple-Point™  
Serrations  
Blade Length: 3 3/8" (8.6 cm)  
Overall Length: 7 3/4" (19.7 cm)

**6213 Delta**

Blade: Double-Taper Ground,  
Clip-Point/Triple-Point™  
Serrations-50%  
Blade Length: 3 7/8" (9.8 cm)  
Overall Length: 9" (22.9 cm)





**COBRA  
GOLD®**



Cobra Gold's handle clearance arc is designed to give you easy access to the spring arm when closing the blade, yet prevents the knife from unlocking during heavy use. The knife's construction permits the blade to pivot into the open and locked position in one single, smooth action. Closing the blade is equally efficient—you can do it with one hand. An integral Zytel® thumb stud is grooved on all sides and top to permit non-slip contact — and it's built for both right and left handers. Hex-head fasteners allow tightening the blade, providing the proper blade tension even under heavy sustained workloads. The stainless steel spring arm creates a positive lock by making maximum contact with the angled locking face of the blade.

All Cobra Gold models include webbed belting scabbards that can be worn vertically or horizontally on the belt.

**6201 Hornet**

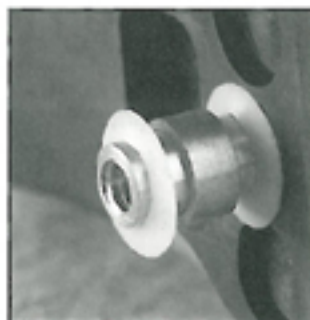
Blade: Double-Taper Ground,  
Clip-Point  
Blade Length: 3" (7.6 cm)  
Overall Length: 6 3/4" (17.1 cm)

**6202 Tempest**

Blade: Double-Taper Ground,  
Clip-Point  
Blade Length: 3 3/8" (8.6 cm)  
Overall Length: 7 3/4" (19.7 cm)

**6203 Cobra Gold**

Blade: Double-Taper Ground,  
Clip-Point  
Blade Length: 3 7/8" (9.8 cm)  
Overall Length: 9" (22.9 cm)



Cobra Gold's velvet-smooth opening and closing action will last a lifetime. Continuous lubrication from an oil-impregnated bronze bearing—combined with slick and durable Teflon® washers—will keep the Cobra performing perfectly.



Originally designed in 1981 by custom knife maker Jim Hammond, the SEALTAC is a tough, dual-function knife. Its double-taper ground, bead-blast finished blade incorporates a Razor-Sharp cutting edge with a Triple-Point™ Serrated spine: the sharp edge is for routine cutting tasks; the serrated edge rips through tough materials like hemp rope in a flash. The double-taper grind leaves as much metal at the blade point as possible for maximum strength. Perfectly balanced, the SEALTAC blade provides maximum cutting efficiency with the knife point slightly raised for superb tracking. The blade area ahead of the integral guards is left unground—maximizing blade strength in the area subject to the most cross-stress. Full tang construction gives SEALTAC superior strength and balance—improving performance and reducing fatigue.

SEALTAC's injection molded Grilon® handle is sculptured with swells at both the hand and pommel for maximum control. You get a non-slip grip regardless of conditions. The grip's overall thickness gives more relaxed control during periods of long use and allows the knife to be held more securely during high stress heavy-load situations.

#### 2100 Vector

Blade Length: 4 1/4" (10.8 cm)  
Overall Length: 8 1/8" (20.6 cm)  
Includes: Shoulder Leather Sheath  
with Boot Clip

#### 2105 SEALTAC®

Blade Length: 5 1/2" (14.0 cm)  
Overall Length: 10 1/2" (26.7 cm)  
Includes: Combination Molded  
Blade Guard and  
Webbed Belting Sheath

#### 2107 SEALTAC® II

Blade Length: 6 1/2" (16.5 cm)  
Overall Length: 12 3/8" (31.4 cm)  
Includes: Combination Molded  
Blade Guard and  
Webbed Belting Sheath

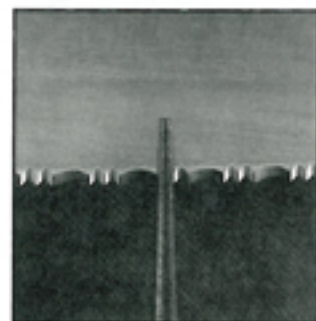


## KNIFE & TOOL SHARPENER



This is the most amazing knife sharpener we've ever worked with. It's an excellent choice for maintaining your fine CRKT knives—and just about any other cutting tool. Titanium and tungsten carbides are micro-welded to the sharpener's tapered steel rod surface. They can't chip or wear off—ever. The rounded contours of the carbide surface burnish and refine the blade serrations or edge to a razor sharpness without removing excess metal. It quickly sharpens knives, axes, broadheads—any tool with a cutting edge. For fishermen, a groove in the rod sharpens fish hooks. For bowhunters, with the rod removed, the handle threads to a broadhead for quick removal. And for compact storage, the tapered rod slides neatly inside its black anodized aluminum handle.

**1500 Knife & Tool Sharpener**  
Sharpener Length: 3 1/2" (8.9 cm)  
Overall Length: 8 1/4" (21. cm)  
Includes: Webbed Belting Scabbard



Unique tapered shape sharpens any serrated blade regardless of the size of serrations.

# COMMANDER



The knife that's as rugged as it sounds. If you demand hard work from a folding knife, the Commander is a great choice. Its skeleton, zinc alloy frame eliminates weight without compromising strength, and the frame's extended guard, generous size and bead-blast finish give you extra gripping power. High-carbon, chromium stainless steel blades stand up to challenging day-to-day cutting tasks, with Triple-Point™ serrations on hand to tackle tougher jobs. The grooved thumb stud and liner lock design allow you to comfortably open or close the blade with a single, smooth, one-handed motion. Hex-head fasteners let you tighten the blade, providing the proper blade tension even under heavy, sustained workloads. The Commander is a highly functional, multi-purpose folding knife, and its convenient pocket/belt clip keeps it always "at the ready."

#### 6602 Red Dog

Blade:Taper-Ground  
Drop-Point  
Blade Length: 2-7/8" (7.3 cm)  
Overall Length: 7" (20.1 cm)

#### 6603 Blitz

Blade:Taper-Ground  
Drop-Point  
Blade Length: 3-1/2" (10.1 cm)  
Overall Length: 8-3/4" (25.2 cm)

#### 6612 Doolittle

Blade:Taper-Ground  
Drop-Point  
Combined Razor-Sharp and  
Triple-Point™ Serrated  
Blade Length: 2-7/8" (7.3 cm)  
Overall Length: 7" (20.1 cm)

#### 6613 Mac

Blade:Taper-Ground  
Drop-Point  
Combined Razor-Sharp and  
Triple-Point™ Serrated  
Blade Length: 3-1/2" (10.1 cm)  
Overall Length: 8-3/4" (25.2 cm)



**COLUMBIA**  
**RIVER** KNIFE  
& TOOL

9720 SW HILLMAN COURT, SUITE 805, WILSONVILLE, OREGON USA 97070  
(800)891-3100 (503)685-5015 FAX(503)682-9680



# COLUMBIA RIVER KNIFE & TOOL

9720 SW HILLMAN COURT, SUITE 805, WILSONVILLE, OREGON USA 97070  
(800)891-3100 (503)685-5015 FAX(503)682-9680



Clockwise from top: Paul, DeDe, Rod, SkyKing



Printed on recycled paper.